



John Williams Close, SE14

£1,450 Per calendar month

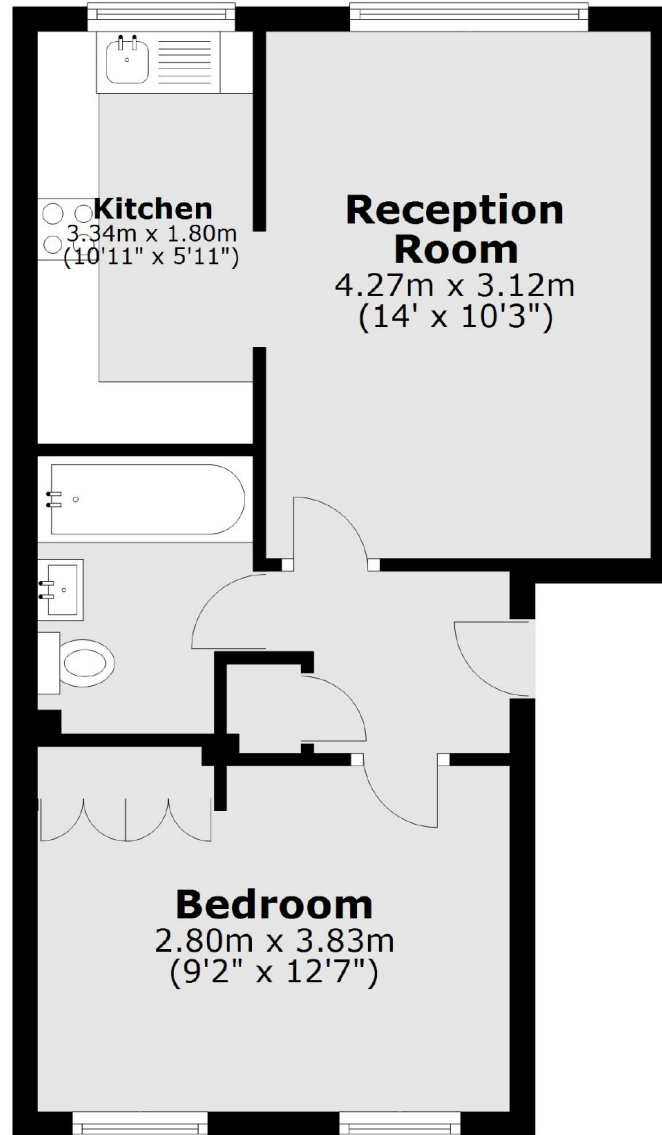
A well presented purpose built ground floor one bedroom flat located in the popular John Williams Close with excellent transport links and close to all local amenities.

John Williams Close is located close to New Cross Gate station offering superb links in to East and Central London and is also well located for New Cross' local amenities including Sainsbury's.

Features

Purpose Built
Ground Floor
One Double Bedroom
Modern Features
Close To Stations
Furnished

**John Williams Close,
London, SE14**



Total area: approx. 38.3 sq. metres (412.8 sq. feet)