



Childeric Road, SE14

£2,400 Per calendar month

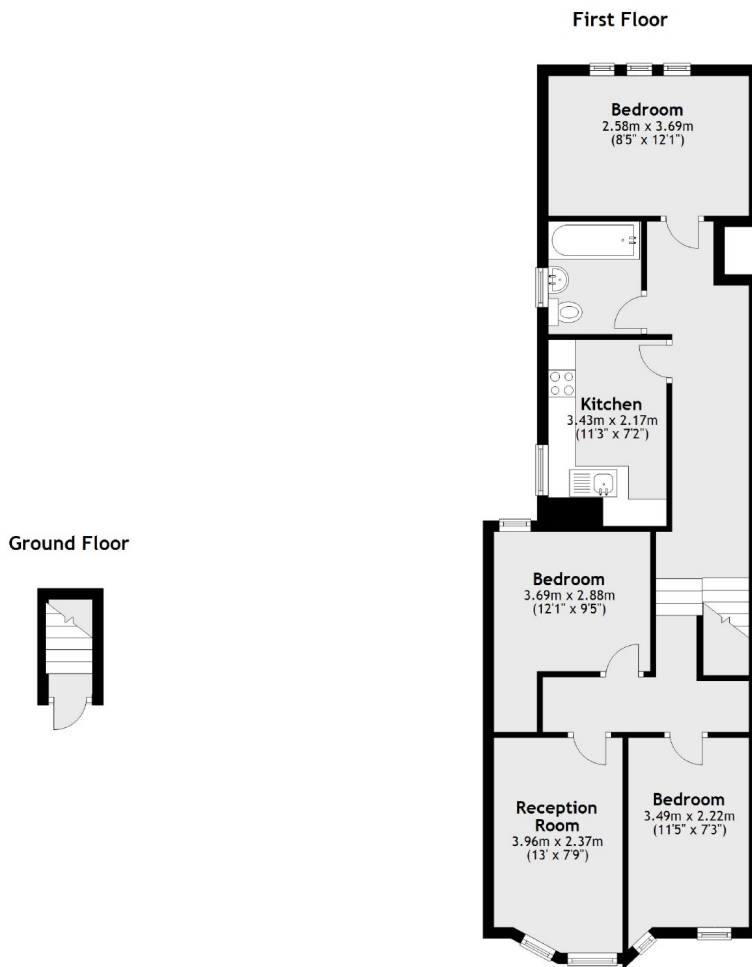
A three bedroom top floor Victorian Conversion flat located in the heart of New Cross, modern finish throughout and ample storage.

Childeric Road overlooks Fordham Park and is ideally located for New Cross and New Cross Gate stations, local amenities, popular cafés, gastro pubs as well as Childeric primary school.

Features

Victorian Conversion
Three Bedrooms
Close To Station
Separate Kitchen
Part-Furnished
Top Floor Flat

Childeric Road, London, SE14



Total area: approx. 66.5 sq. metres (716.1 sq. feet)