



Parkfield Road, SE14

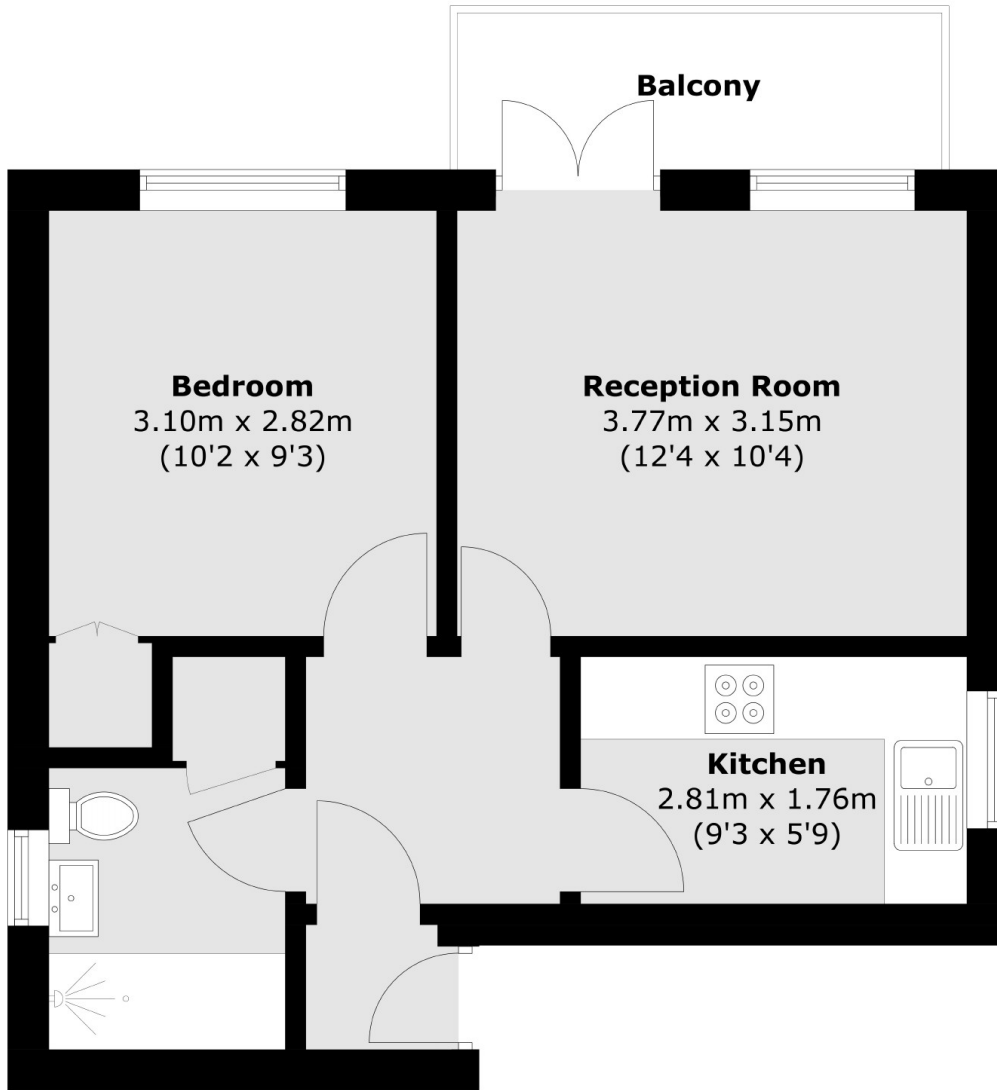
£350,000

This stunning one bedroom apartment is available with no onward chain. This home has been recently refurbished, has a private balcony and access to a large communal garden. This property further boasts an allocated parking space.

Features

- One Bedroom
- Leasehold
- Allocated Parking Space
- Private Balcony
- Communal Garden
- No Onward Chain

Parkfield Road,
London, SE14



Total area (approx.): 37.0 sq. m (398.3 sq. ft)
Balcony area (approx.): 4.0 sq. m (43.0 sq. ft)

Dexters

New Cross
256 New Cross Road
London
SE14 5PL
Sales
020 7313 3660

Energy Rating: C. We aim to make our particulars both accurate and reliable. However they are not guaranteed; nor do they form part of an offer or contract. If you require clarification on any points then please contact us, especially if you're traveling some distance to view. Please note that appliances and heating systems have not been tested and therefore no warranties can be given as to their good working order.

 **RICS** | Regulated
Estate Agent
and Letting Agent

dexters.co.uk