



New Cross Road, SE14

£450,000

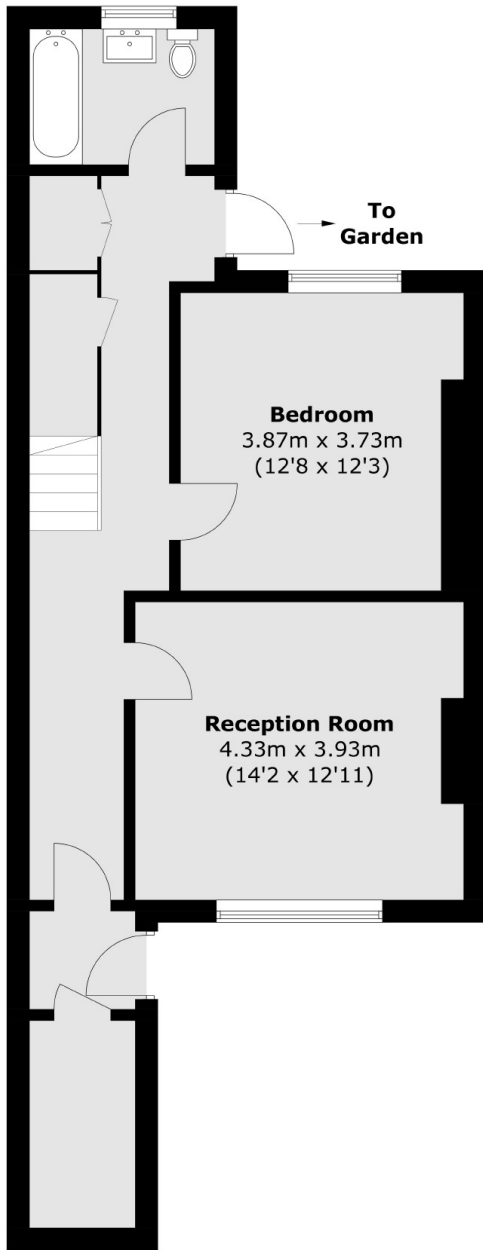
A two double bedroom split-level Victorian Maisonette. Including modern features, ample storage throughout and a private section of the rear garden.

Located on New Cross Road you are within walking distance to New Cross and New Cross Gate stations as well as all the amenities that New Cross Road has to offer.

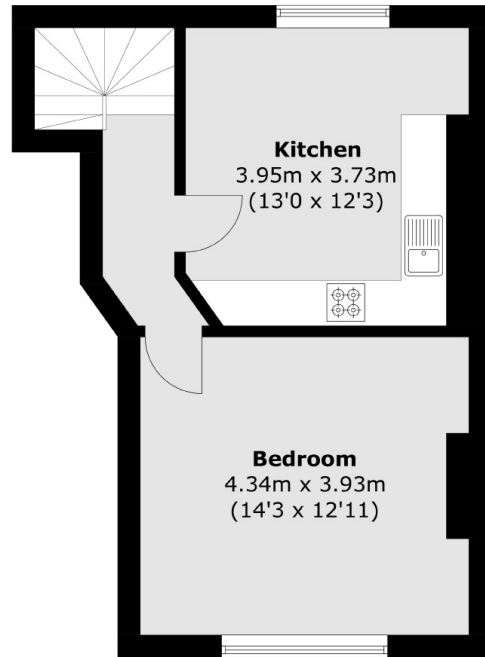
Features

- Victorian Maisonette
- Two Double Bedrooms
- Split-Level
- Private Section Of Garden
- Ample Storage
- No Onward Chain
- Over 1000sq ft

New Cross Road,
London, SE14



Ground Floor



First Floor

Total area (approx.): 99.2 sq. m (1,067.7 sq. ft)