



Mantle Road, SE4

£475,000

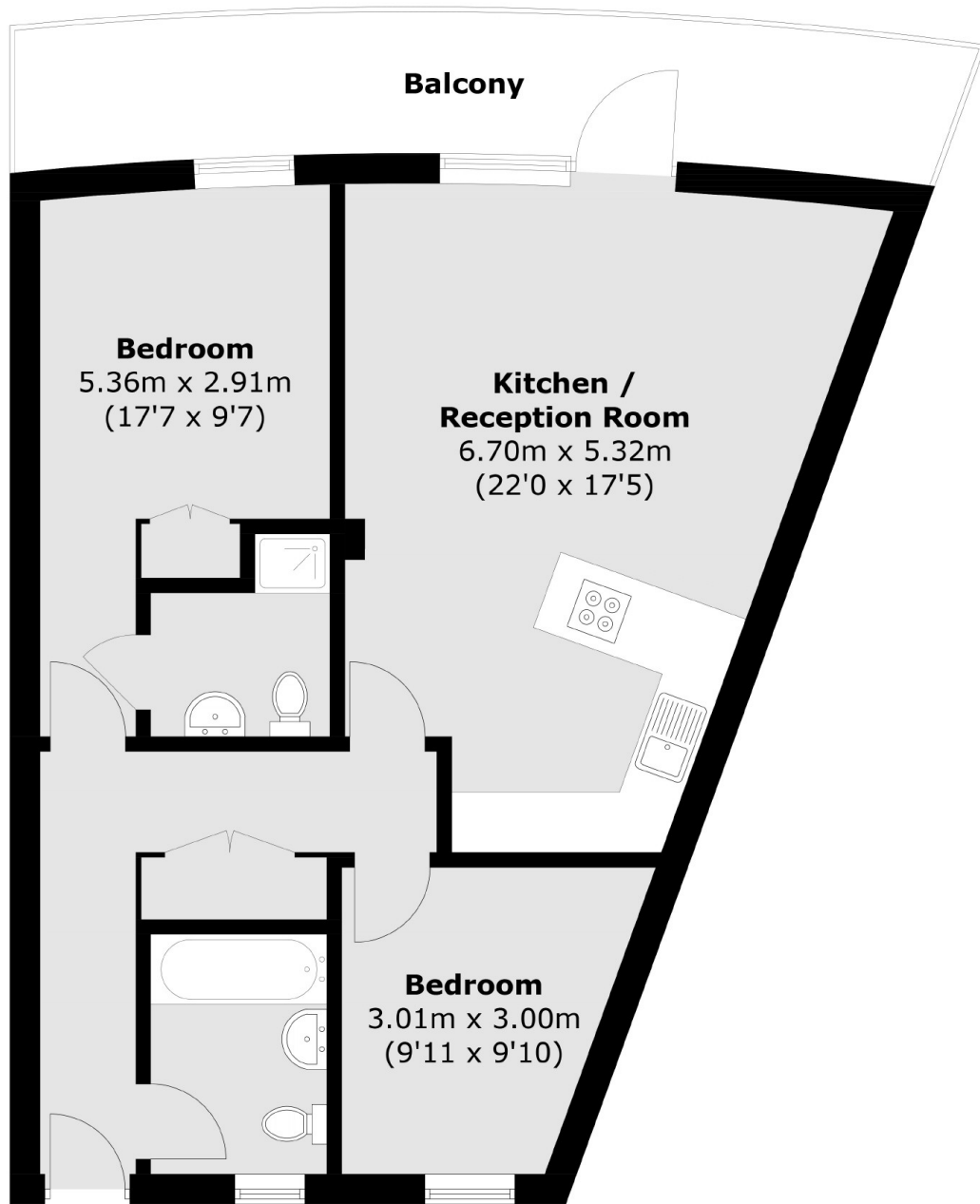
This two bedroom, two bathroom apartment is now available, this home offers ample living space with its own private balcony.

Mantle Road is a desirable road in the heart of Brockley with its vibrant range of local shops, cafes and restaurants nearby. The fantastic transport links from both Brockley and Crofton Park stations can get you to London Bridge and Canary Wharf in 10 and 15 minutes respectively.

Features

- Two Bedrooms
- Balcony
- Great Condition
- Leasehold
- Spacious
- En Suite

Mantle Road,
London, SE4



Total area (approx.): 67.5 sq. m (726.5 sq. ft)
Balcony: 13.4 sq. m (144.2 sq. ft)

Dexters

New Cross
256 New Cross Road
London
SE14 5PL
Sales
020 7313 3660

Energy Rating: B. We aim to make our particulars both accurate and reliable. However they are not guaranteed; nor do they form part of an offer or contract. If you require clarification on any points then please contact us, especially if you're traveling some distance to view. Please note that appliances and heating systems have not been tested and therefore no warranties can be given as to their good working order.

 **RICS** | Regulated
Estate Agent
and Letting Agent

dexters.co.uk