



## Pomeroy Street, SE14

£650,000

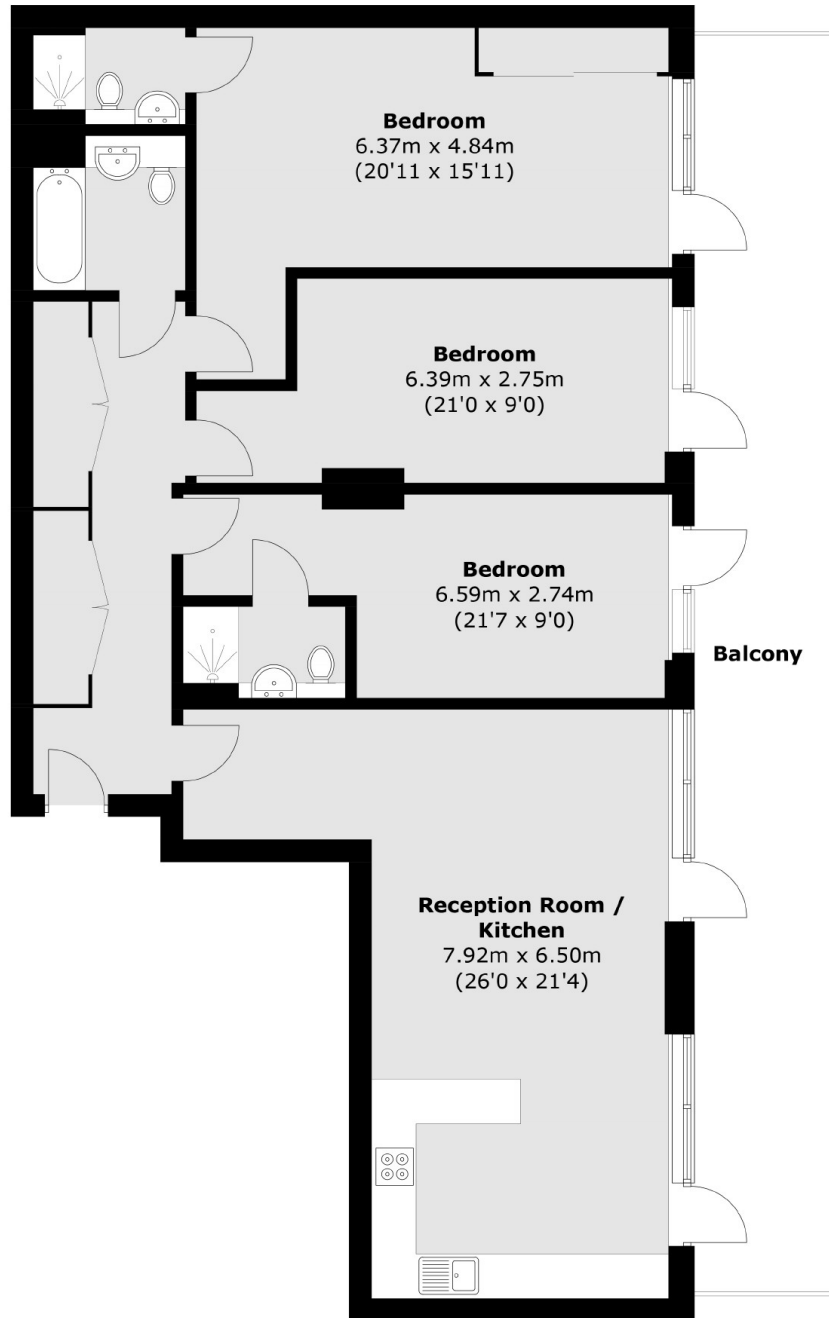
A three bedroom penthouse in one of New Cross' most sought after developments. This superb property offers over 1250 sq ft of living, is particularly light and benefits from a private roof terrace.

Pomeroy Street is situated in the Peckham vicinity with an eclectic mix of bars, restaurants, and independent coffee shops on your doorstep. Queens Road Peckham, New Cross, Deptford and Deptford Bridge DLR are all within easy reach.

### Features

- Excellent Condition
- Three Double Bedrooms
- Large Bathrooms
- Open Plan
- Private Roof Terrace
- Convenient Location

Pomeroy Street,  
London, SE14



Total area (approx.): 118.1 sq. m (1,271.2 sq. ft)  
Balcony: 31.9 sq. m (343.4 sq. ft)