



Edric Road, SE14

£425,000

This charming and very well presented two bedroom maisonette offers lateral living space and a open plan kitchen living area. The property also has its own basement, private garden space and own entranceway.

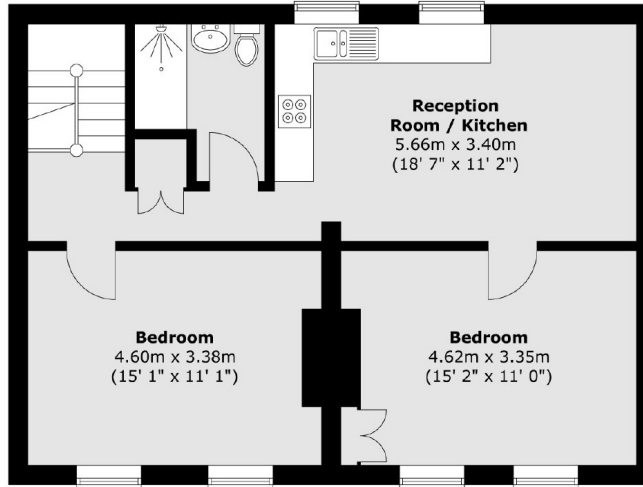
Edric Road is situated within the Hatcham Park conservation area so perfectly located for access to, New Cross Gate and New Cross main line station and the DLR at Deptford Bridge

Features

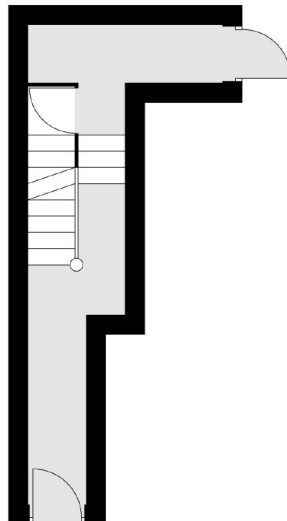
- Two Double Bedrooms
- Period Features
- Private Garden Space
- Own Front Door
- Double Glazed
- Transport Links

Edric Road,
London, SE14

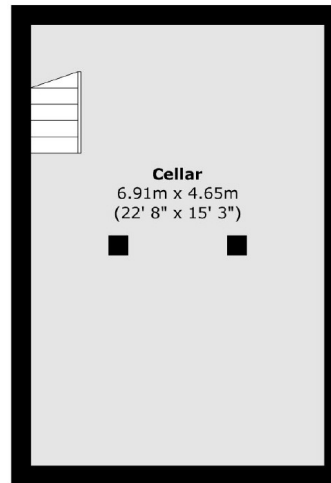
First Floor



Ground Floor



Cellar



Total area (approx.) : 109 sq. m (1173 sq. ft)