



Hatcham Park Road, SE14

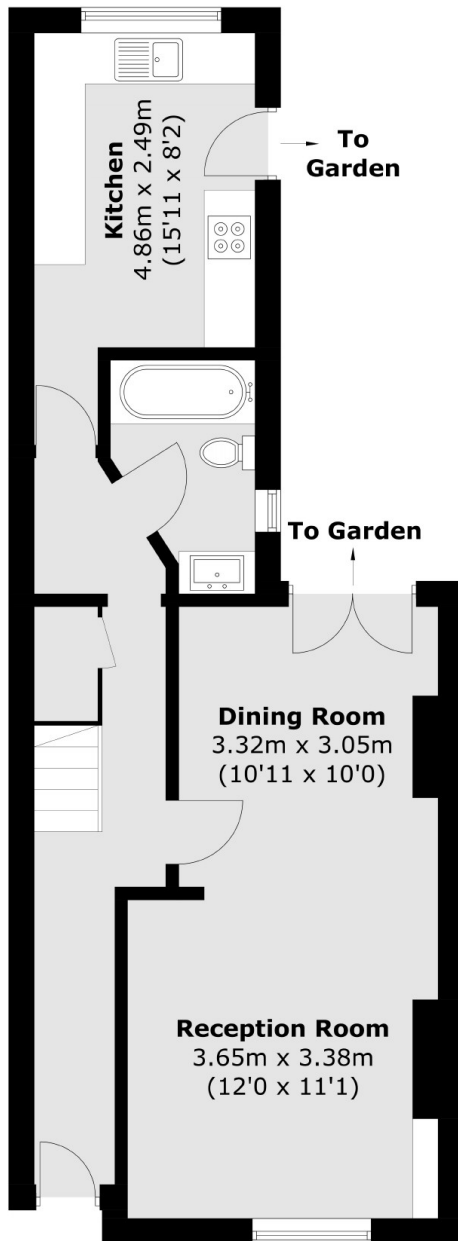
£775,000

A wonderful three bedroom Victorian terrace set within the highly sought after Hatcham Park Conservation Area. The home has plenty of entertaining space for a growing family with a double reception room and a large kitchen leading to a well-established garden.

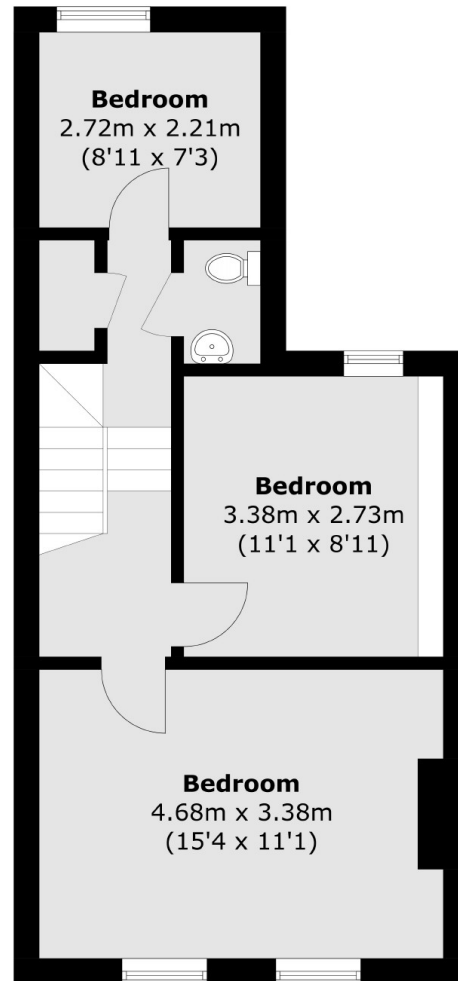
Features

- Hatcham Park Conservation Area
- Victorian Terrace
- Three Double Bedrooms
- Double Reception Room
- Private Garden
- Excellent Transport Lin

Hatcham Park Road,
London, SE14



Ground Floor



First Floor

Total area (approx.): 94.9 sq. m (1,021.5 sq. ft)