



New Cross Road, SE14 £925,000

This spacious four bedroom family home is now available. The property is situated over three floors and there is direct access to the large, south facing private garden.

New Cross Road has excellent transport links from New Cross Gate, New Cross, Queens Road Peckham to London Bridge and Canary Wharf as well as Shoreditch, Hackney, Islington and the Elizabeth line at Whitechapel and close to all local amenities.

Features

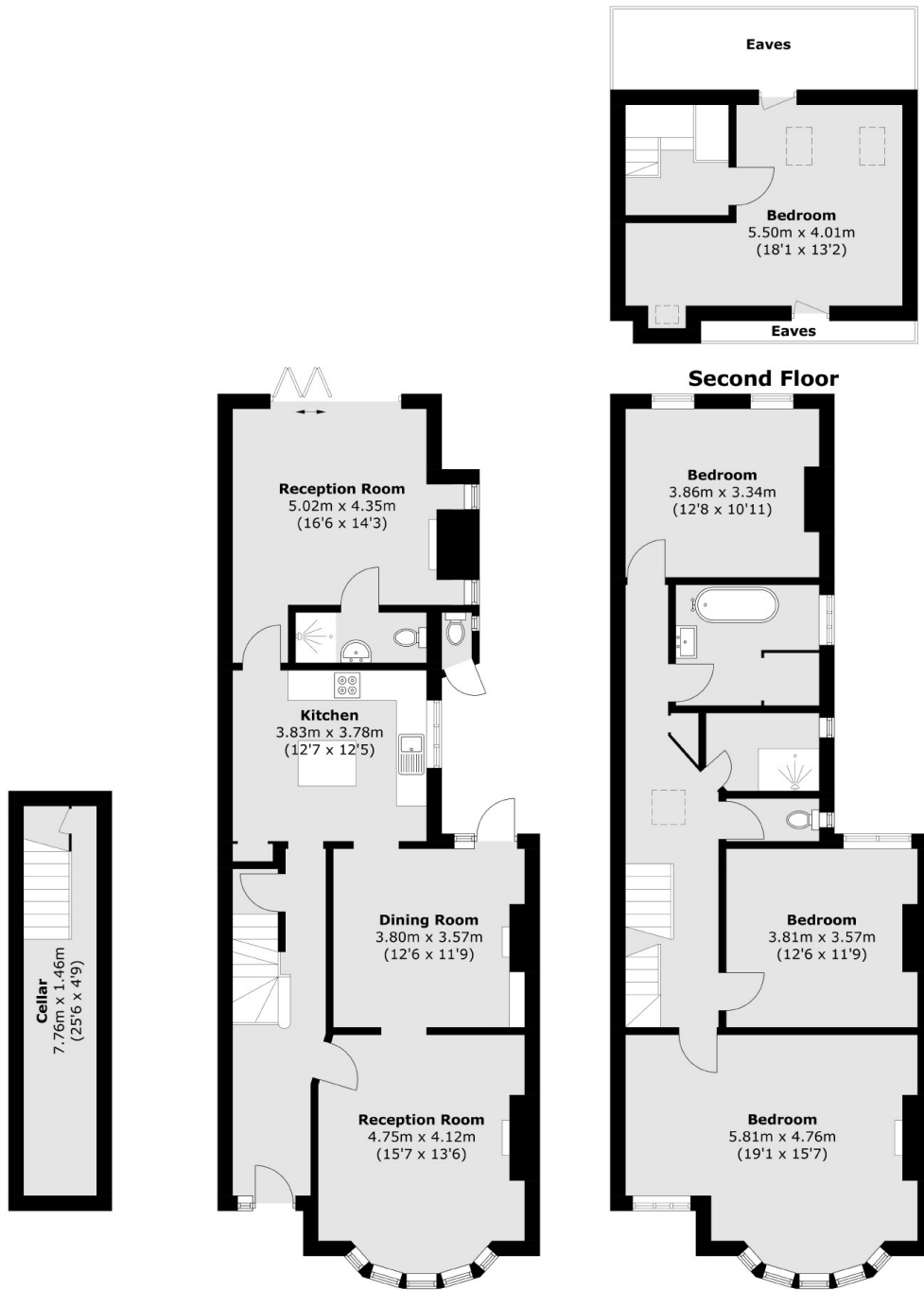
- Freehold
- Four Bedrooms
- Large Private Garden
- Built Approximately 1911
- Loft Extension
- Great Transport Links



New Cross Road, SE14



New Cross Road, London, SE14



Ground Floor

Ground Floor

First Floor

Total area (approx.): 193.7 sq. m (2,074.8 sq. ft)
(Excluding Eaves)

External WC area (approx.): 0.6 sq. m (6.4 sq. ft)