



New Cross Road, SE14 £550,000

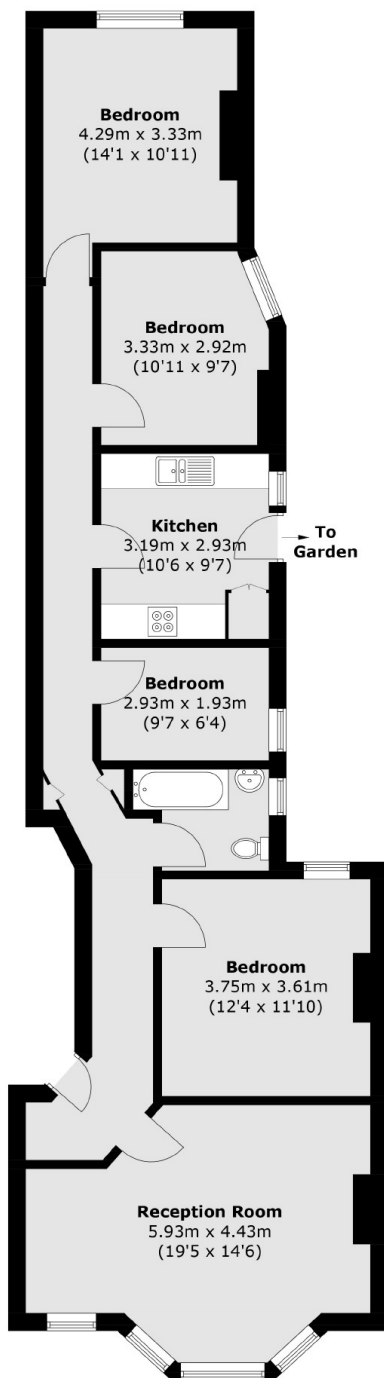
A fantastic four bedroom apartment set within a stunning Mansion block. The property is beautifully presented throughout with original period features, a large reception/dining room and direct access via an external staircase to the well kept communal garden.

Located in the heart of New Cross Gate with excellent transport links into London Bridge, an abundance of Cafes, Gastro pubs, live music venues and the beautiful Telegraph Hill Parks.

Features

- Sought After Mansion Block
- Four Bedrooms
- Communal Rear Garden
- Large Reception Room
- Original Features
- Chain Free

New Cross Road, London, SE14



Total area (approx.): 96.9 sq. m (1,043.0 sq. ft)