



Moulding Lane, SE14

£399,999

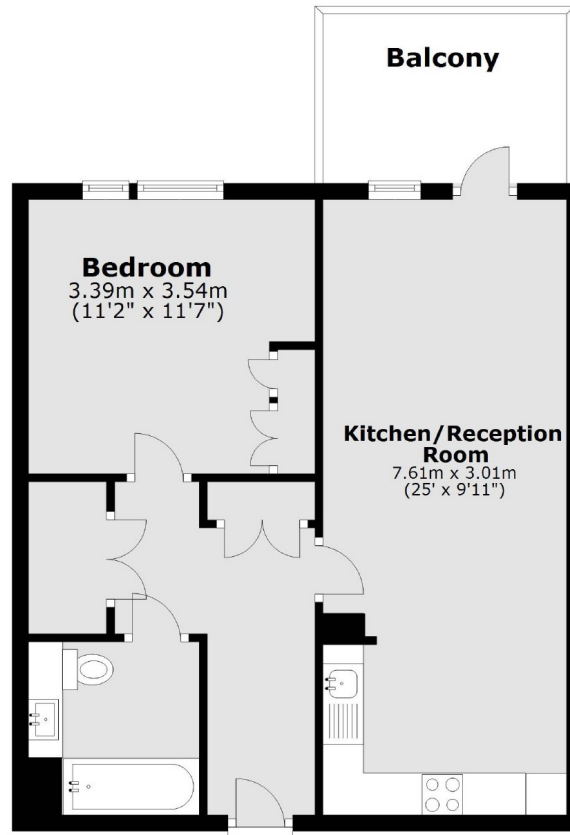
At over 538 Sq Ft this spacious one double bedroom apartment is ideal for someone looking for the luxurious lifestyle in a prime residential location. Situated on the Fourth floor, the property is presented in immaculate condition, is naturally bright and comprises large open plan kitchen/reception with private balcony and double bedroom with a stylish bathroom/wc.

Alloy House is located 0.5 miles from Deptford station and 0.5 miles from New Cross station, offering fantastic transport links to all of London. A wide range of shops, cafés, delis and restaurants are on the doorstep.

Features

- New Build Development
- Open Plan Kitchen/Reception
- Double Bedroom
- Stylish Open Plan Kitchen
- Private Balcony
- Chain Free

Moulding Lane, London, SE14



Main area: Approx. 50.6 sq. metres (544.7 sq. feet)
Plus balconies, approx. 6.6 sq. metres (71.0 sq. feet)