



## Geoffrey Road, SE4

### £400,000

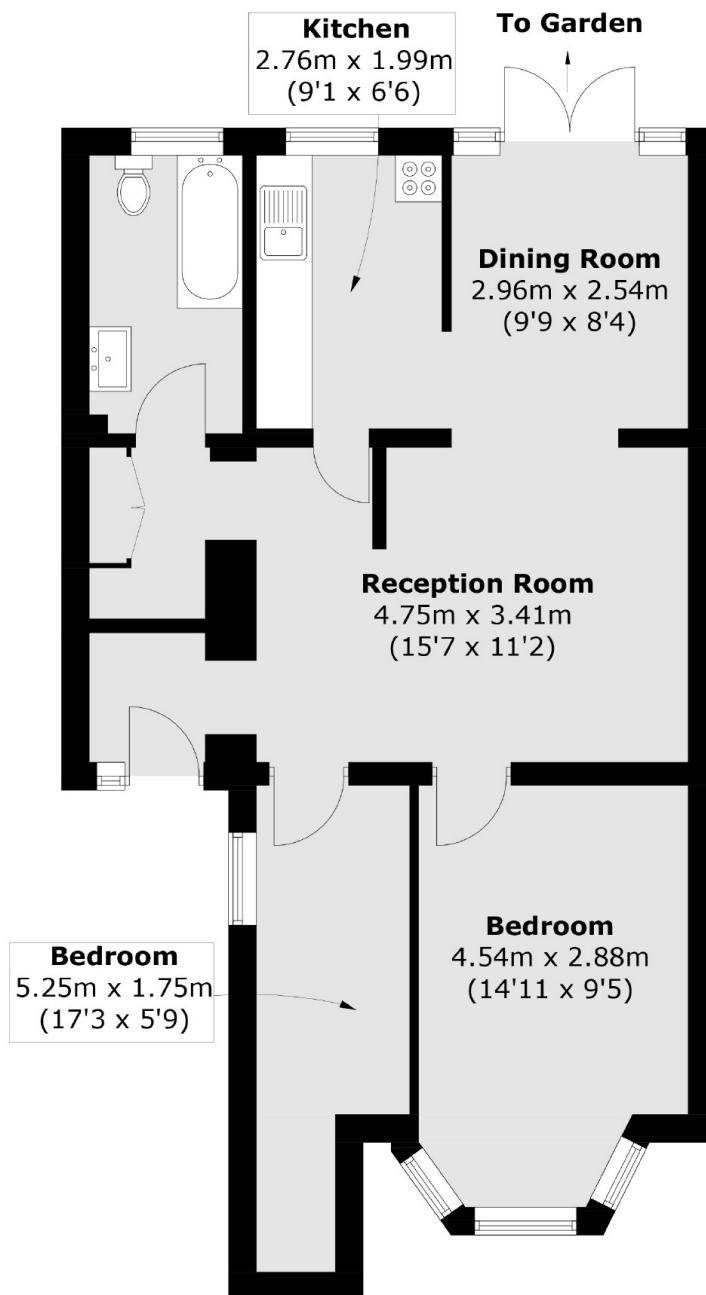
A two bedroom Victorian conversion with private entrance and direct access to a shared garden, offering renovation potential and no onward chain.

Geoffrey Road is a residential street conveniently located for the cafés, bars and amenities of Brockley Road. Brockley train station offers easy access into the City.

### Features

- Two Bedrooms
- Ground Floor
- Shared Garden
- Chain Free
- Private Entrance
- 684 Sq Ft

# Geoffrey Road, London, SE4



Total area (approx.): 63.6 sq. m (684.6 sq. ft)