



Avonley Road, SE14

£300,000

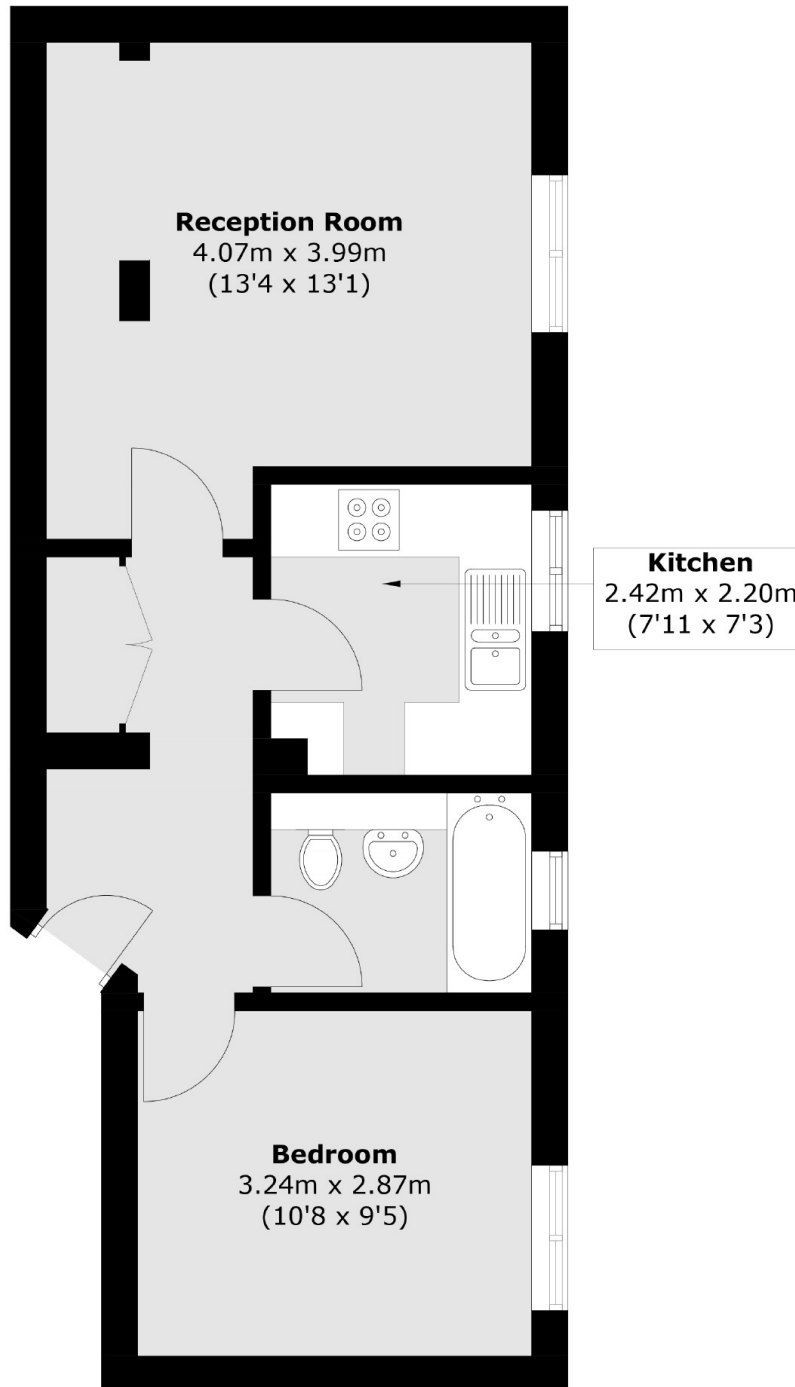
This modern one bedroom flat benefits from a sought-after and vibrant location and comprises a double bedroom, kitchen and bathroom. It showcases modern interior design complemented by ample natural light and comes with its own allocated parking space.

Avonley Road is a short distance from the fantastic amenities and facilities of New Cross Road, while New Cross Gate Station is also within reach.

Features

- One Bedroom
- Modern Design
- Allocated Parking
- Leasehold
- Great Condition
- No Onward Chain

Avonley Road,
London, SE14



Total area (approx.): 40.9 sq. m (440.2 sq. ft)

Dexters

New Cross
256 New Cross Road
London
SE14 5PL
Sales
020 7313 3660

Energy Rating: D. We aim to make our particulars both accurate and reliable. However they are not guaranteed; nor do they form part of an offer or contract. If you require clarification on any points then please contact us, especially if you're traveling some distance to view. Please note that appliances and heating systems have not been tested and therefore no warranties can be given as to their good working order.

 **RICS** | Regulated
Estate Agent
and Letting Agent

dexters.co.uk