



Tarragon Close, SE14

£550,000

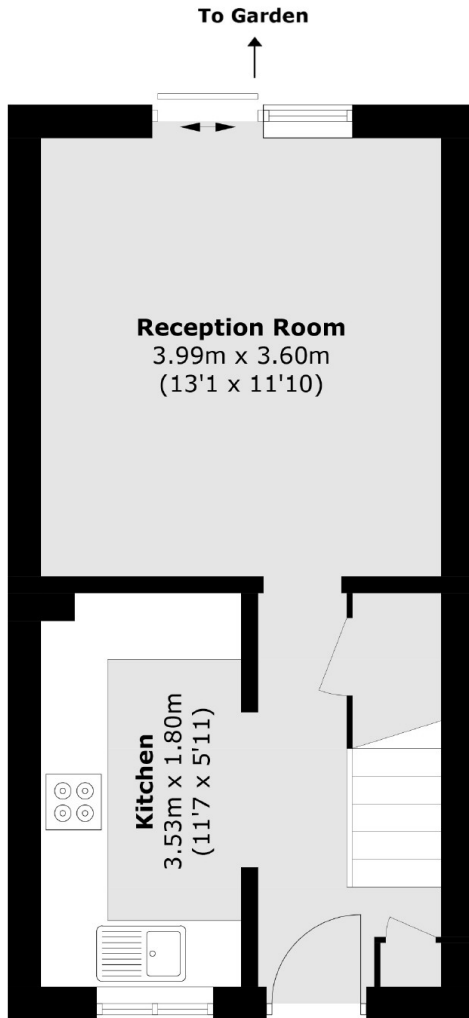
This two bedroom terraced home offers modern living in great condition. Downstairs consists of a kitchen and lounge/diner that leads out into a south facing private garden. Upstairs there are two double bedrooms and a family bathroom. The property also boasts, double glazing, gas central heating and is offered with no onward chain.

Tarragon Close is a short distance from the fantastic amenities and facilities of New Cross Road, while New Cross Gate Station is also within reach.

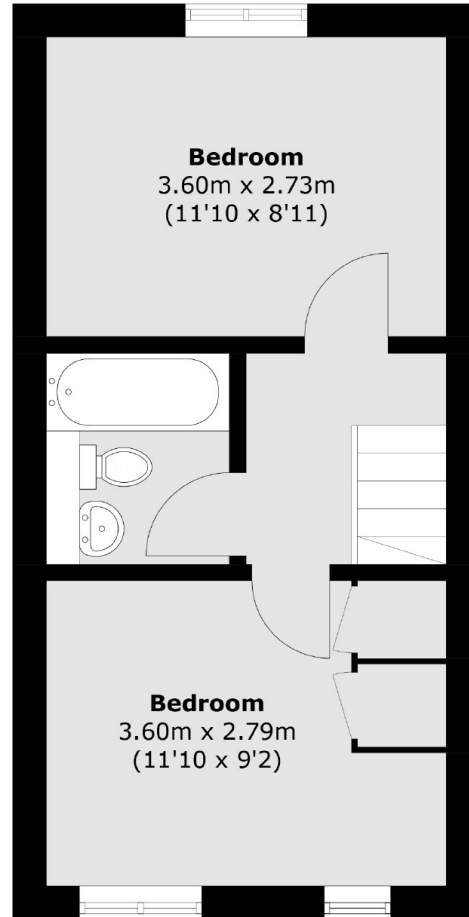
Features

- Two Bedrooms
- Freehold
- Terraced
- South Facing Garden
- No Onward Chain
- Great Condition

Tarragon Close, London, SE14



Ground Floor



First Floor

Total area (approx.): 55.3 sq. m (595.2 sq. ft)