



New Cross Road, SE14

£350,000

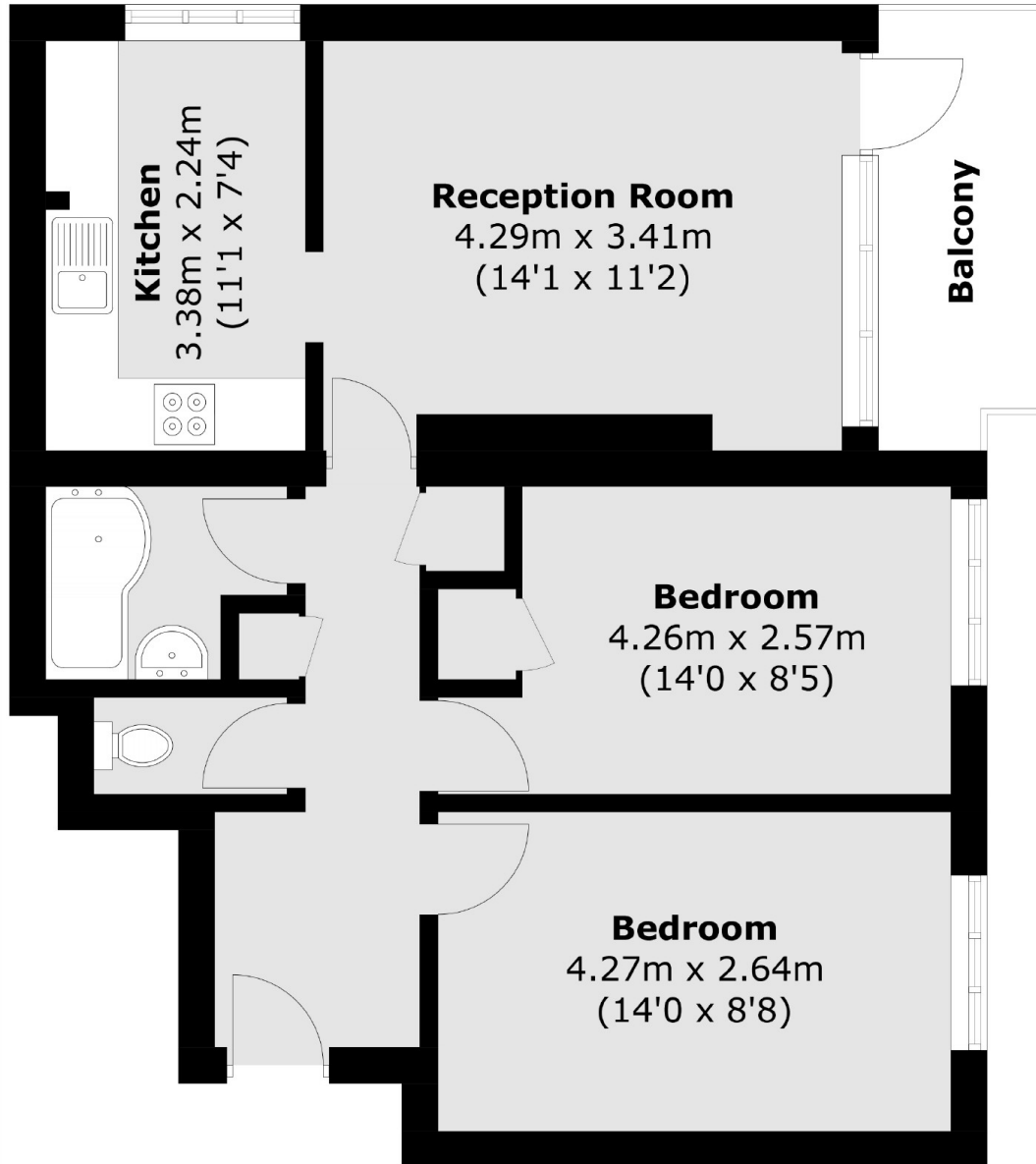
Top floor, two bedroom, one bathroom purpose built flat with excellent transport links and local amenities. This property is offered in good condition throughout with accommodation comprising entrance hall, reception, fitted kitchen and two double bedrooms. The property further boasts free parking for residents and a south facing balcony.

New Cross Road is in the heart of the local area with a buzzing parade of thriving independent shops, bars and restaurants. Excellent transport connections can be found on your doorstep with both New Cross Gate and Queens Road providing quick and frequent mainline links to London Bridge, Blackfriars and the City.

Features

- Two Double Bedrooms
- Recently Refurbished
- Spacious
- Balcony
- Communal Parking
- Great Transport Links

New Cross Road, London, SE14



Total area (approx.): 59.2 sq. m (637.2 sq. ft)
Balcony: 4.7 sq. m (50.5 sq. ft)