



New Cross Road, SE14

£600,000

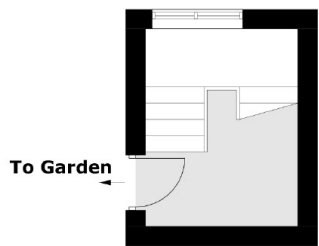
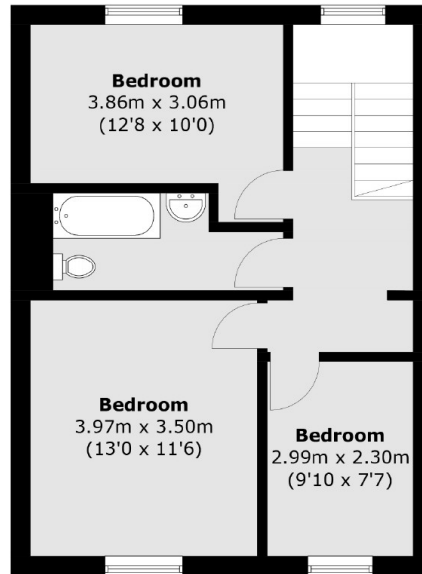
At over 1209 Sq Ft, this split level Victorian conversion offers bright and spacious living accommodation with a private section of garden, four bedrooms, reception and a large kitchen /diner.

New Cross Road is in the heart of the local area with a buzzing parade of thriving independent shops, bars and restaurants. Excellent transport connections can be found on your doorstep with both New Cross Gate and Queens Road providing quick and frequent mainline links to London Bridge, Blackfriars and the City.

Features

- Victorian Conversion
- Four Bedrooms
- Split Level
- Kitchen /Diner
- Private Section Of Garden
- Close To New Cross Gate

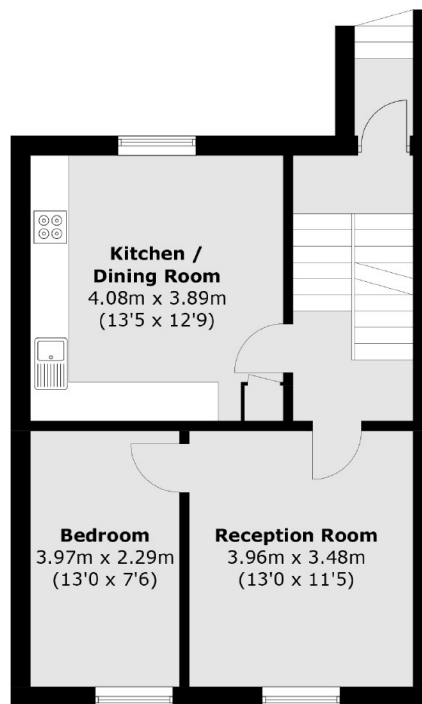
New Cross Road, London, SE14



**Raised
Ground Floor**



Ground Floor



Total area (approx.): 112.4 sq. m (1,209.7 sq. ft)