



Lloyd Villas, SE4

£560,000

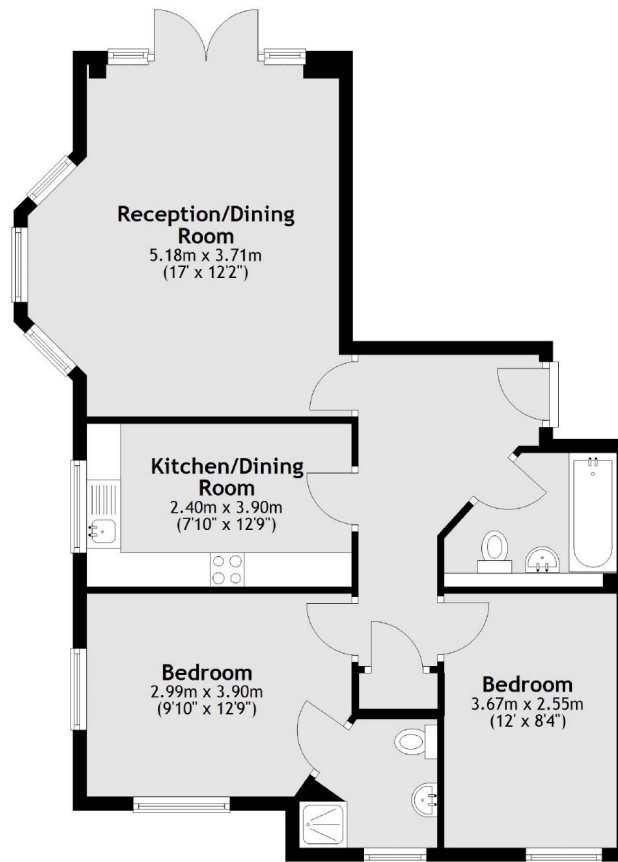
Stunning two bedroom, two bathroom apartment located in the popular Brockley conservation area. This secluded and spacious apartment benefits from allocated parking, en suite, modern kitchen, large open plan living/ dining room and ample storage throughout. This property further benefits from being a share of Freehold.

Lloyd Villas is in the heart of the local area with a buzzing parade of thriving independent shops, bars and restaurants. Numerous transport connections can be found on your doorstep with both New Cross Gate, New Cross and St. Johns stations providing quick and frequent mainline links.

Features

- Two Bedrooms
- Allocated Parking
- Garden
- Brockley Conservation Area
- Bright And Spacious
- Share Of Freehold

Lloyd Villas, London, SE4



Total area: approx. 70.3 sq. metres (757.1 sq. feet)