



Jerningham Road, SE14 £515,000

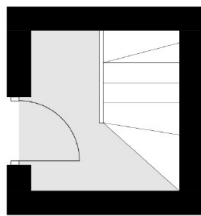
Beautifully presented two bedroom top floor Victorian conversion flat offered to the market in excellent condition throughout and maintained to a high standard by the current owners. Ideally located for New Cross Gate station, Goldsmith's University and popular bars, cafes and restaurants.

Located on this sought after residential road in the Telegraph Hill conservation area with excellent transport links such as New Cross Gate station, Brockley Station, Nunhead and across the road from Telegraph Hill Park. Community spirit is strong in Telegraph Hill with its renowned parks, weekly farmers market and an array of vibrant cafés, live music venues and the popular annual Telegraph Hill festival.

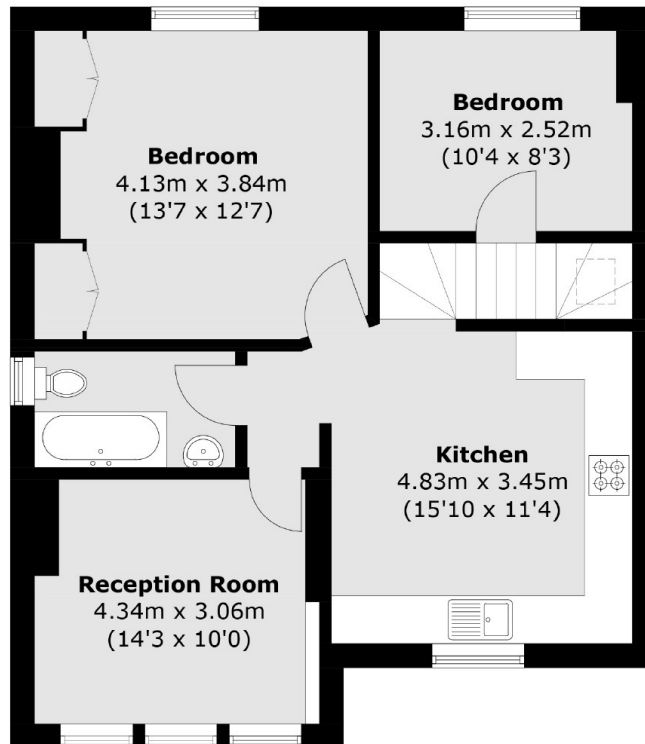
Features

- Victorian Conversion
- Two Bedrooms
- Top Floor
- Beautifully Presented
- Large Kitchen
- Communal Garden
- Excellent Transport Links

Jerningham Road,
London, SE14



First Floor



Second Floor

Total area (approx.): 64.3 sq. m (692.1 sq. ft)