



Hatcham Park Mews, SE14

£1,250,000

This spacious, bright, contemporary four bedroom house boasts a Scandinavian aesthetic, high ceilings and beautiful accommodation throughout. The accommodation comprises three double bedrooms, a single bedroom/study (Main and 2nd bedroom with en suite), large open plan reception kitchen area, main bathroom and downstairs cloakroom. The main bedroom has direct access to the south facing roof terrace which overlooks your rear garden below. Built over three floors these are connected by sets of floating stairs with a large skylight above adding to the overall ambience of the property. This home is also accessed via its own private and secure courtyard.

Features

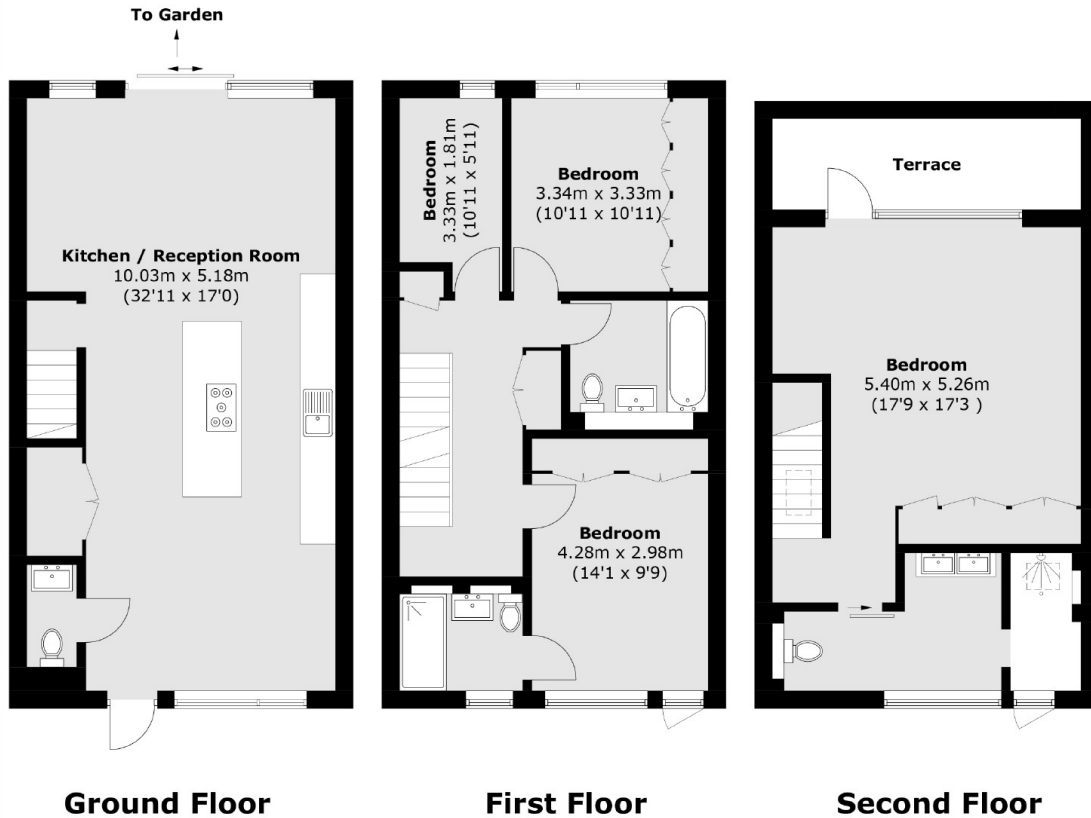
- Four Bedrooms
- Stunning Condition
- Roof Terrace
- South Facing Garden
- Enclosed Front Courtyard
- Freehold
- Contemporary Design
- Under Floor Heating
- Solar Panels



Hatcham Park Mews, SE14



Hatcham Park Mews, London, SE14



Total area (approx.): 148.2 sq. m (1,594.2 sq. ft)
Terrace (approx.): 8.1 sq. m (87.2 sq. ft)