



## Moulding Lane, SE14

£550,000

A two bedroom modern apartment in one of New Cross' most sought after developments. At 861 Sq Ft this superb property is one of the larger two bedrooms within the development, is particularly light and benefits from a private roof terrace

Stylishly presented and with an immaculate finish throughout accommodation comprises inviting entrance hall which leads through to bright open plan kitchen/ reception room, the kitchen is contemporary in style and provides plenty of space for dining whilst the living area opens to a private roof terrace. Both bedrooms are similar in size, there is an ensuite shower room/wc to the master bedroom and a stylish bathroom/wc serving the other.

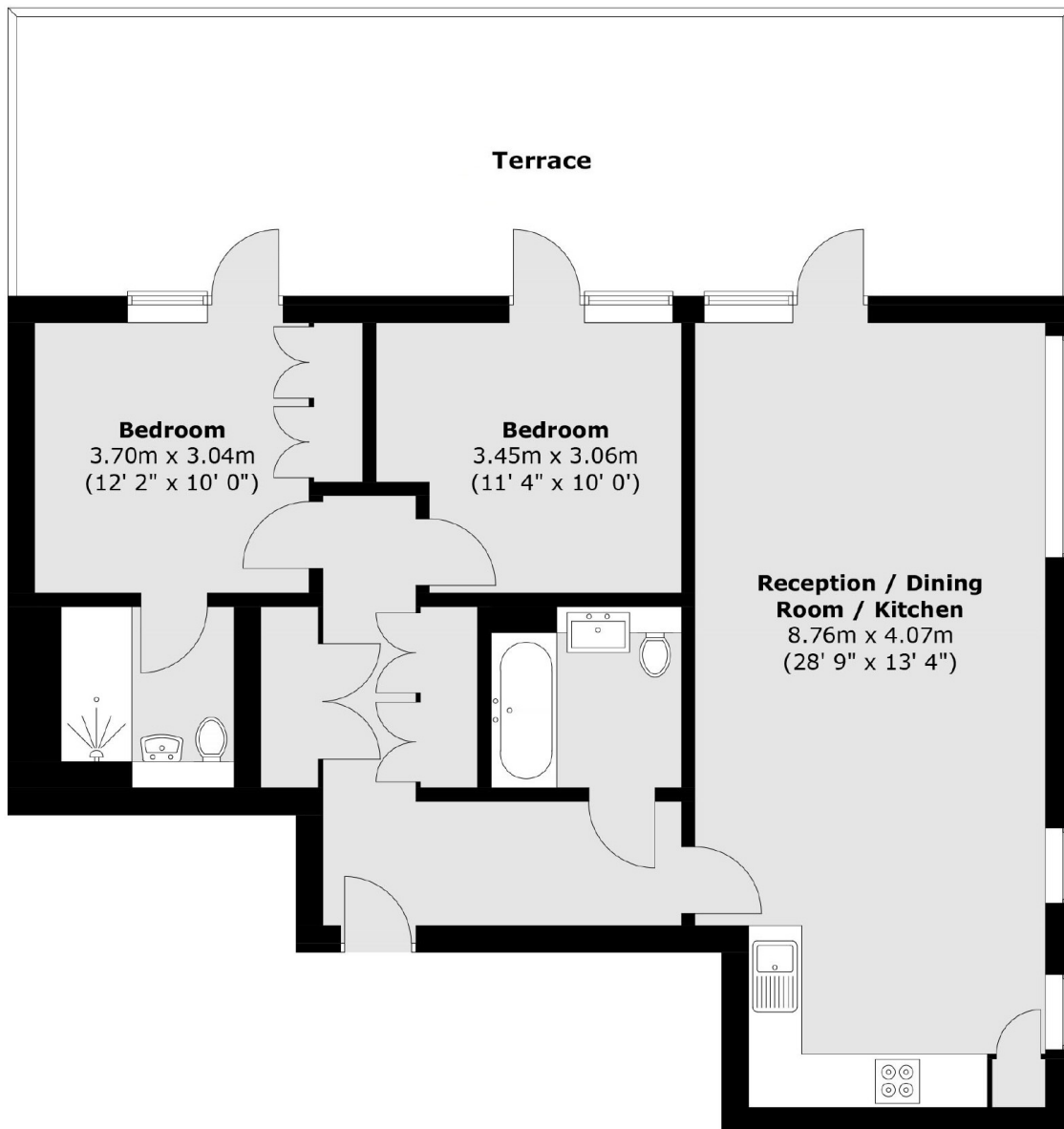
Moulding Lane is situated in the heart of New Cross with an eclectic mix of bars, restaurants, and independent coffee shops on your doorstep. New Cross, Deptford and Deptford Bridge DLR are all

### Features

- Panoramic City Views
- Two Double Bedrooms
- Two Bathrooms
- Over 850 Sq Ft
- Private Roof Terrace (Over 300 Sq Ft)
- Chain Free
- Concierge
- Cycle Storage

# Moulding Lane, London, SE14

## Sixth Floor



Total area (approx.) : 80 sq. m (861 sq. ft)  
Total terrace area (approx.) : 29.1 sq. m (313 sq. ft)

**Dexters**

New Cross  
256 New Cross Road  
London  
SE14 5PL  
Sales  
020 7313 3660

Energy Rating: B. We aim to make our particulars both accurate and reliable. However they are not guaranteed; nor do they form part of an offer or contract. If you require clarification on any points then please contact us, especially if you're traveling some distance to view. Please note that appliances and heating systems have not been tested and therefore no warranties can be given as to their good working order.

 **RICS** Regulated  
Estate Agent  
and Letting Agent

dexters.co.uk