



Bolden Street, SE8

£835,000

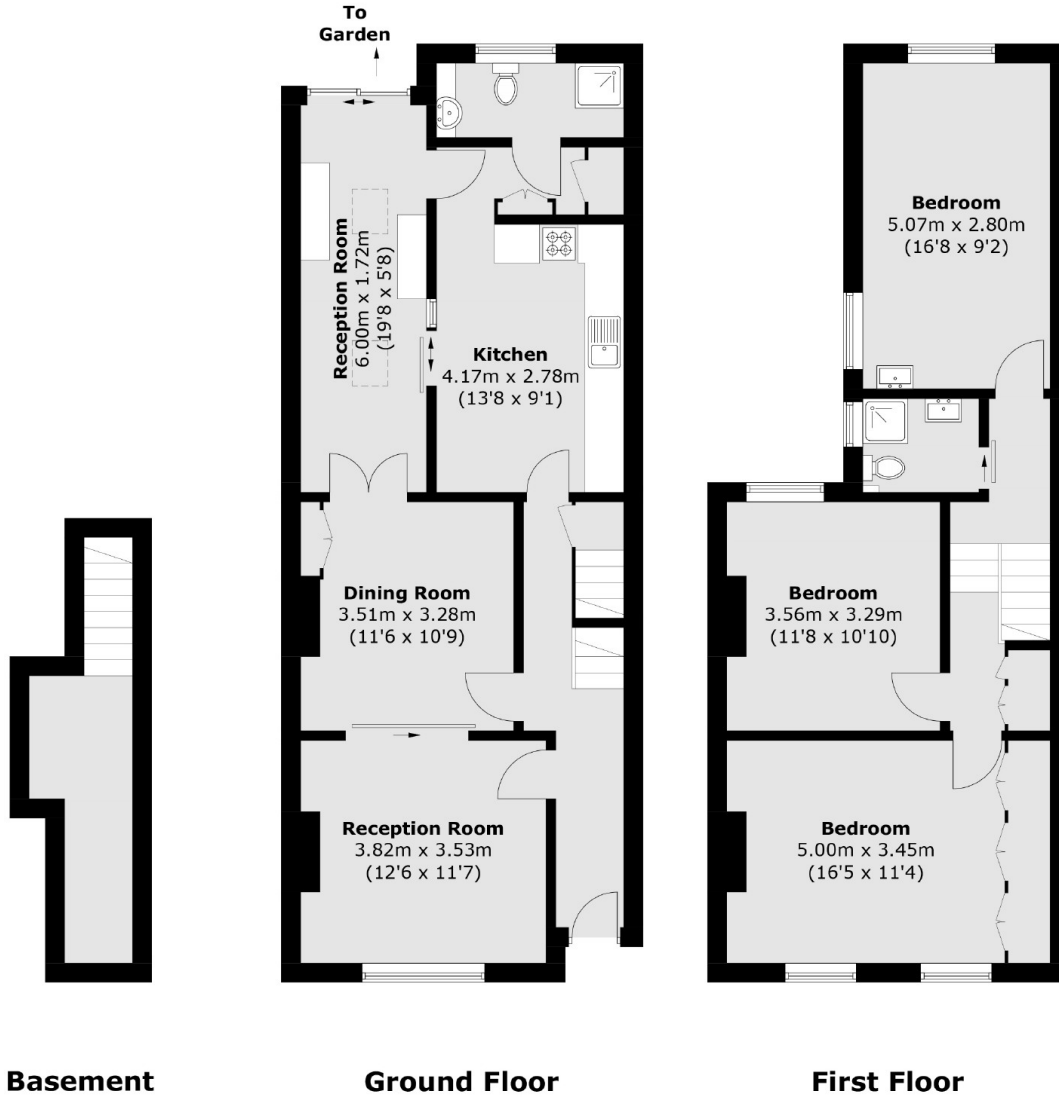
This three bedroom home offers spacious living. There are two reception rooms on the ground floor with an open plan layout and to the rear there is a kitchen with access to a private garden. Upstairs there are three bedrooms and a family bathroom.

St Johns is a friendly neighbourhood popular among young professionals and families. The station is a 3-minute walk from where there are fast and frequent services into London Bridge and Cannon Street. Deptford Bridge DLR is nearby for access to Canary Wharf and the London Overground from New Cross has easy access to East and North London.

Features

- Three Bedrooms
- Freehold
- Charming Features
- Private Garden
- No Onward Chain
- Brookmill Conservation Area

Bolden Street,
London, SE8



Total area (approx.): 130.9 sq. m (1,409.0 sq. ft)