



Dennett's Road, SE14

£875,000

A three/four double bedroom, mid terrace Victorian house situated in this sought after location. Including modern features throughout, ample storage and a private rear garden.

Dennett's Road is situated in the popular area close to a range of local amenities including New Cross Gate and Queens Road Peckham Overground Stations.

Features

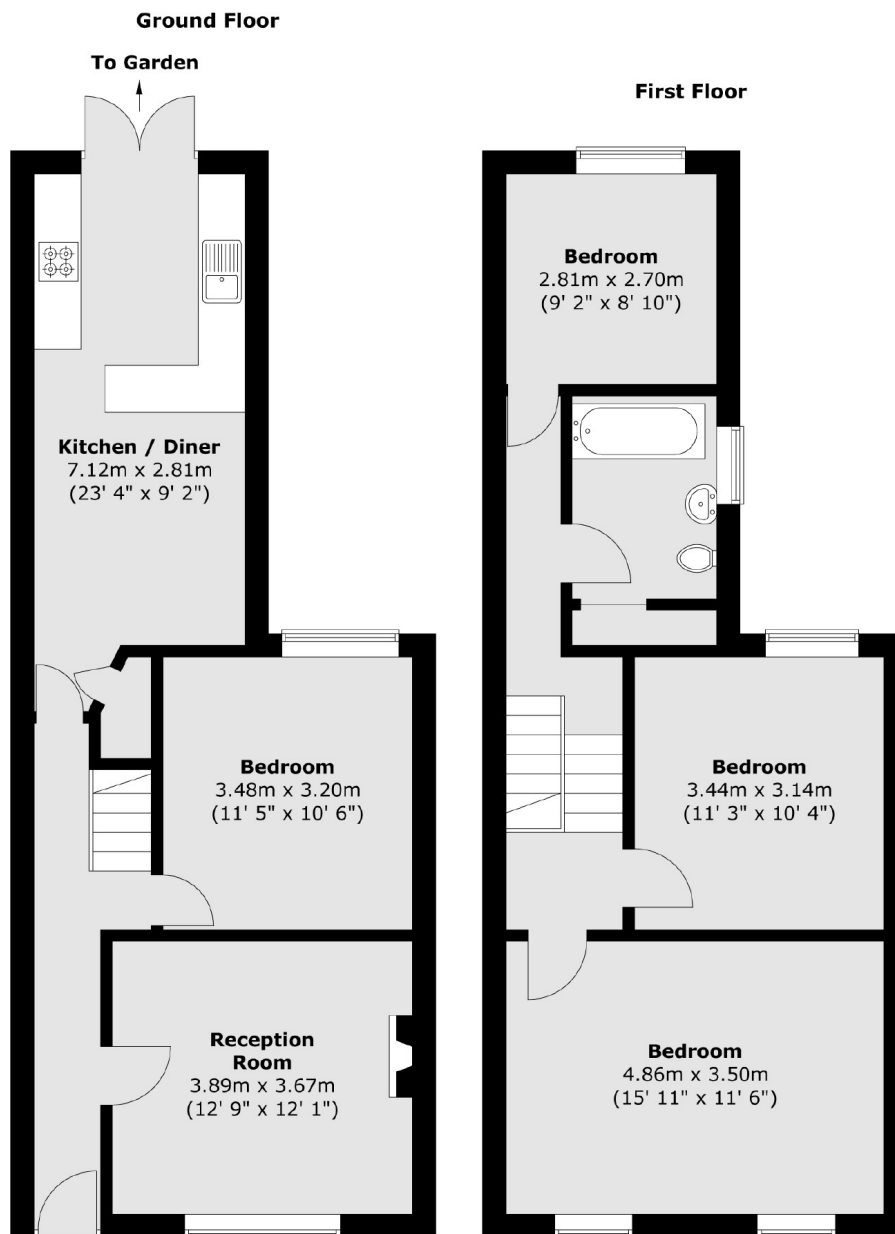
- Freehold
- No Onward Chain
- Great Location
- Three/Four Bedrooms
- Private Garden
- Period Features



Dennett's Road, SE14



Dennett's Road, London, SE14



Total area (approx.) : 103.3 sq. m (1112 sq. ft)