



Farrow Lane, SE14

£197,000

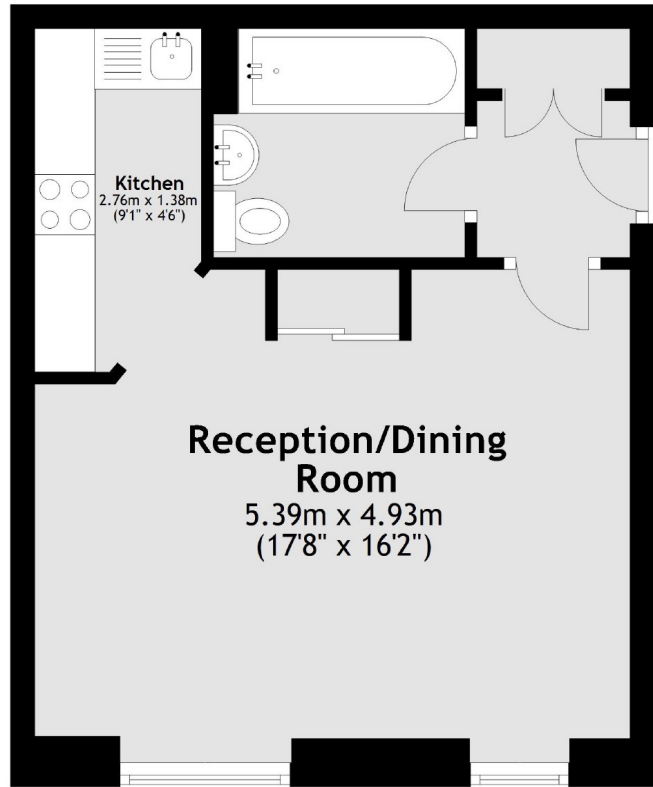
This modern studio flat benefits from a sought-after and vibrant location, the property benefits from a separate kitchen and delightful open spaces. It showcases modern interior design complemented by ample natural light and comes with its own garage.

Farrow Lane is a short distance from the fantastic amenities and facilities of New Cross Road, while New Cross Gate Station is also within reach.

Features

- Studio
- Modern Design
- Allocated Parking
- Leasehold
- Excellent Transport Links
- Garage

Farrow Lane, London, SE14



Total area: approx. 30.0 sq. metres (322.6 sq. feet)