



## Farrow Lane, SE14

£525,000

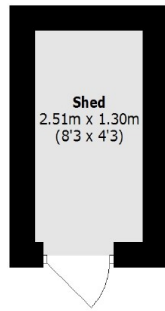
This two bedroom terraced home offers modern living in great condition. Downstairs consists of a kitchen, WC and lounge/diner that leads out into a south facing private garden. Upstairs there are two double bedrooms and a family bathroom. The property also boasts private off street parking, double glazing and gas central heating.

Farrow Lane is a short distance from the fantastic amenities and facilities of New Cross Road, while New Cross Gate Station is also within reach.

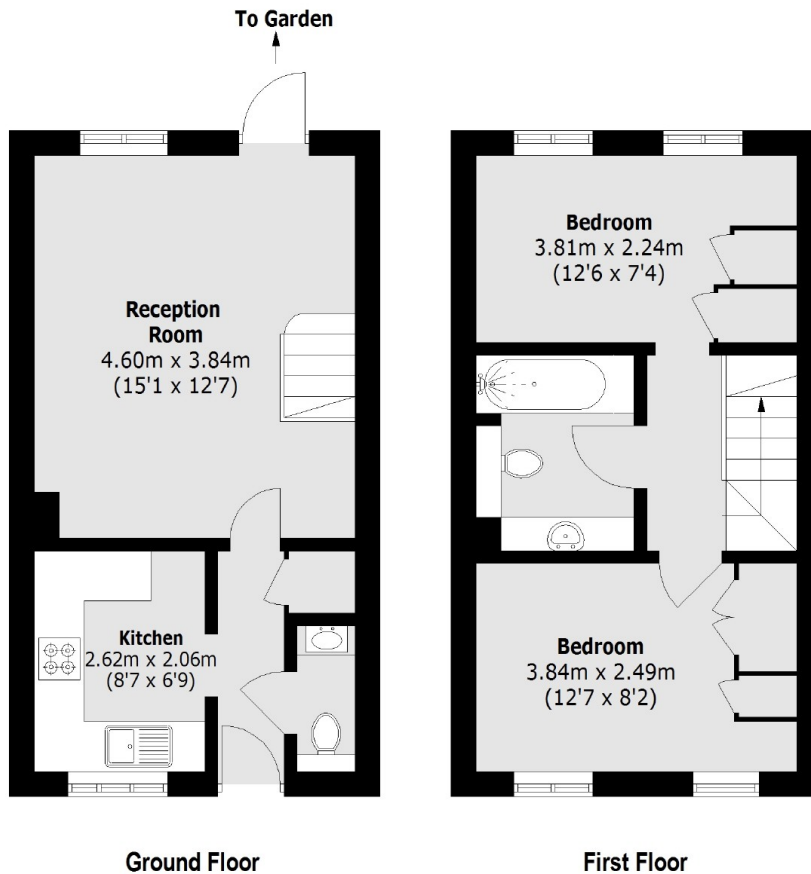
### Features

- Two Bedrooms
- Freehold
- Terraced
- South Facing Garden
- Off Street Parking
- Great Condition

# Farrow Lane, London, SE14



(Not Shown In Actual  
Location / Orientation)



Total area (approx.): 57.2 sq. m (615.7 Sq. ft)  
Shed: 3.4 sq. m (36.6 Sq. ft)