

## Bolden Street, SE8

£450,000

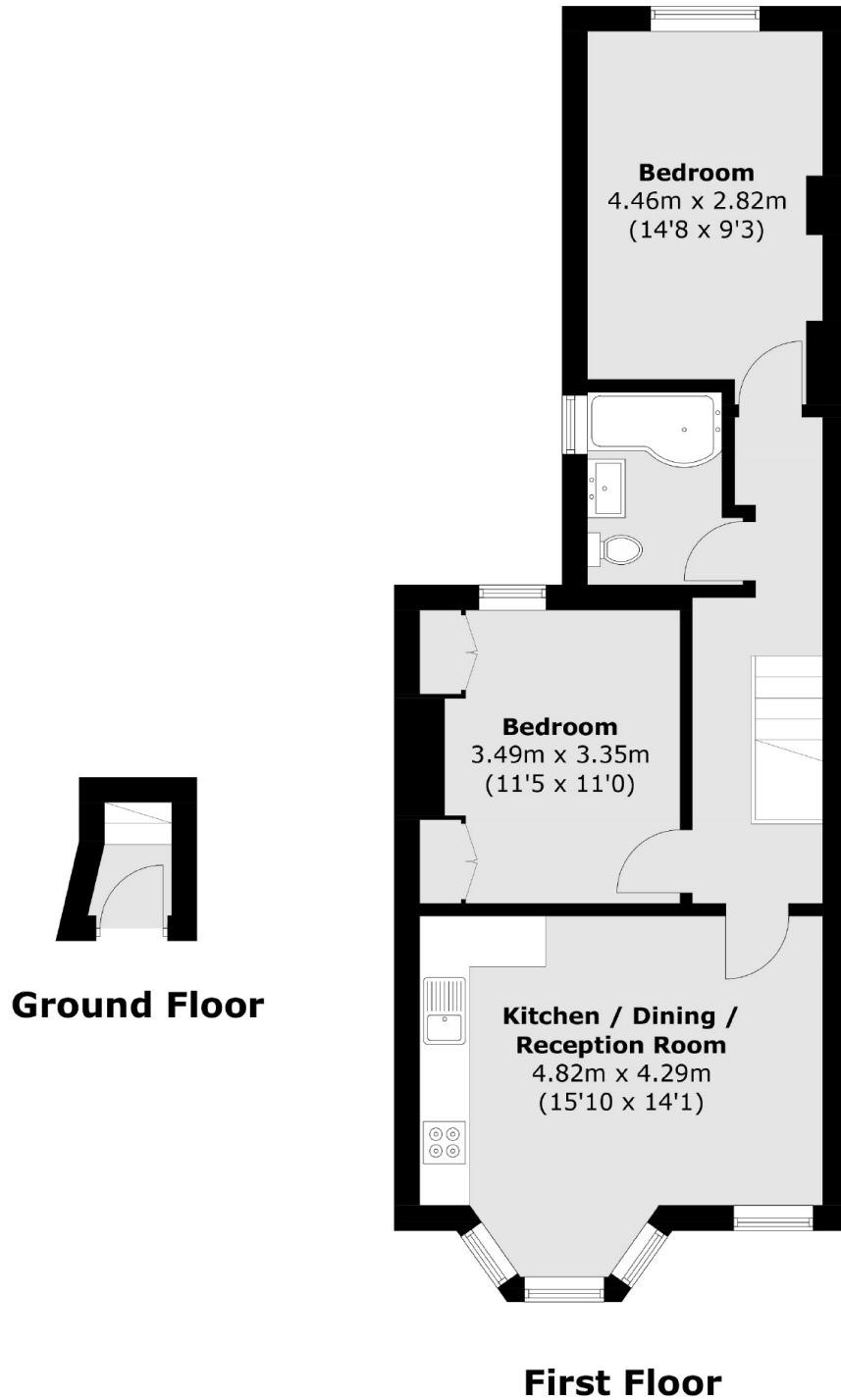
This stunning two bedroom Victorian apartment is now available. This home has two double bedrooms, a open plan kitchen living area and a family bathroom. The property has been stylishly finished and is offered with no onward chain.

St Johns mainline station is a few minutes away on foot, as well as Brookmill Park and the popular Talbot pub. Lewisham mainline and DLR stations, the shopping centre and accompanying high street are all just a short walk away.

### Features

- Victorian Apartment
- Two Double Bedrooms
- Conservation Area
- Open Plan
- Stunning Condition
- No Onward Chain

Bolden Street,  
London, SE8



Total area (approx.): 56.1 sq. m (603.8 sq. ft)

**Dexters**

New Cross  
256 New Cross Road  
London  
SE14 5PL  
Sales  
020 7313 3660

Energy Rating: D. We aim to make our particulars both accurate and reliable. However they are not guaranteed; nor do they form part of an offer or contract. If you require clarification on any points then please contact us, especially if you're traveling some distance to view. Please note that appliances and heating systems have not been tested and therefore no warranties can be given as to their good working order.

 **RICS** | Regulated  
Estate Agent  
and Letting Agent

[dexters.co.uk](http://dexters.co.uk)