



Kitto Road, SE14

£350,000

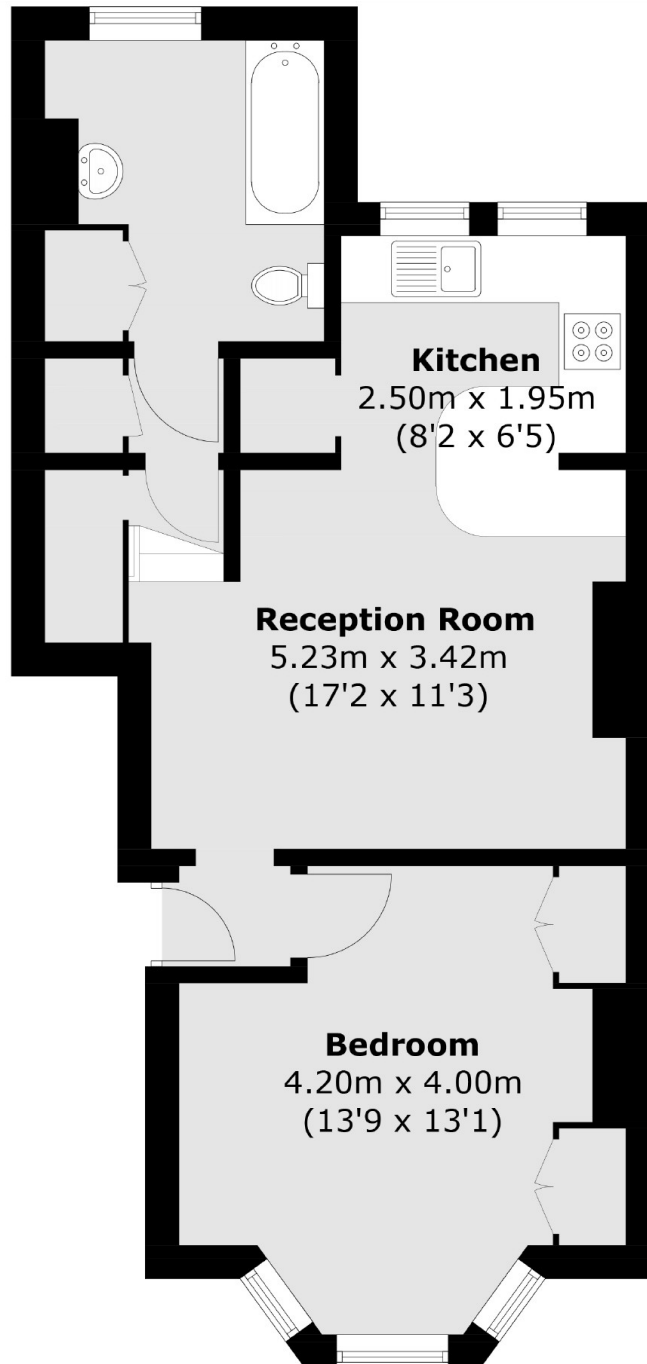
A spacious, Victorian conversion flat with a large bay fronted double bedroom, open plan kitchen reception area and a bathroom to the rear. This property boasts views across the city and in close vicinity to local parks of Telegraph Hill.

Kitto Road is a sought after tree-lined street within the Telegraph Hill conservation area. It's perfectly positioned for Nunhead, New Cross Gate and Queens Road stations, all of which provide frequent rail connections into Central London. The beautiful green spaces of Telegraph Hill parks are nearby as well as a weekly farmers market and an array of cafes, restaurants and pubs.

Features

- One Bedroom
- Victorian Conversion
- Open Plan
- View Of The City
- Great Condition
- Raised Ground Floor

Kitto Road,
London, SE14



Total area (approx.): 47.0 sq. m (505.9 sq. ft)

Dexters

New Cross
256 New Cross Road
London
SE14 5PL
Sales
020 7313 3660

Energy Rating: C. We aim to make our particulars both accurate and reliable. However they are not guaranteed; nor do they form part of an offer or contract. If you require clarification on any points then please contact us, especially if you're traveling some distance to view. Please note that appliances and heating systems have not been tested and therefore no warranties can be given as to their good working order.

 **RICS** | Regulated
Estate Agent
and Letting Agent

dexters.co.uk