



Batavia Road, SE14

£525,000

A two bedroom modern apartment in one of New Cross' most sought after developments. At 856 Sq Ft this superb property is one of the larger two bedrooms within the development, is particularly light and benefits from a private balcony.

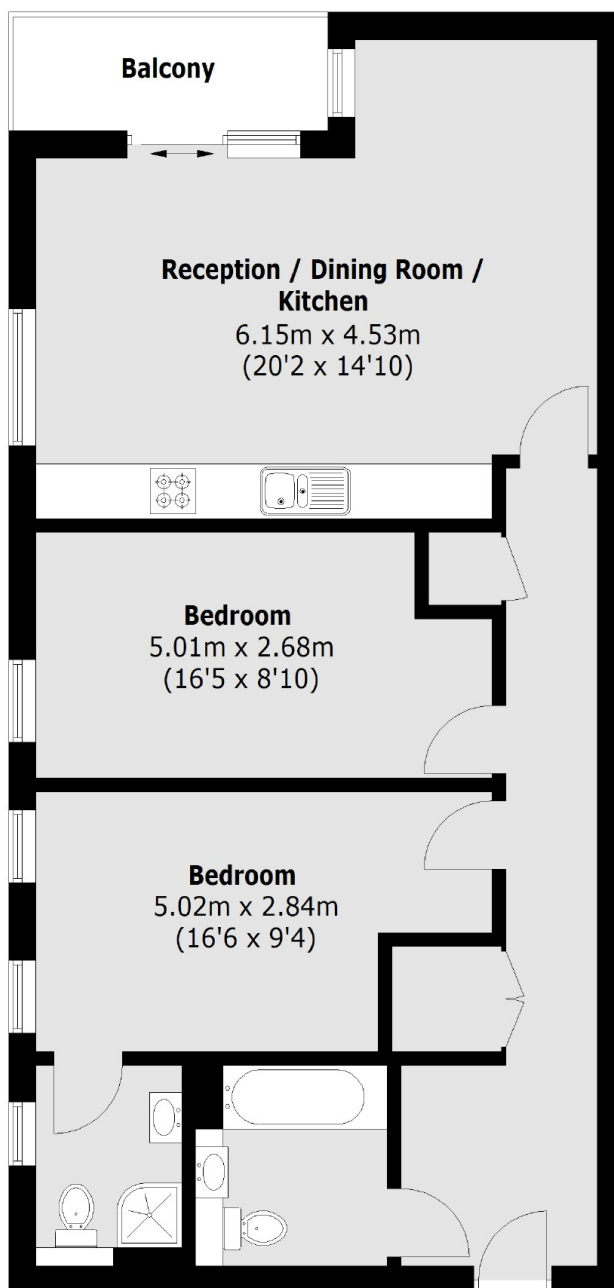
Stylishly presented and with an immaculate finish throughout accommodation comprises inviting entrance hall which leads through to bright open plan kitchen/ reception room, the kitchen is contemporary in style and provides plenty of space for dining whilst the living area opens to a private balcony. Both bedrooms are similar in size, there is an ensuite shower room/wc to the master bedroom and a stylish bathroom/wc serving the other.

Batavia Road is situated in the heart of New Cross with an eclectic mix of bars, restaurants, and independent coffee shops on your doorstep. New Cross, Deptford and Deptford Bridge DLR are all within reach.

Features

- Convenient Location
- Excellent Condition
- Two Double Bedrooms
- Two Bathrooms
- Private Balcony
- Over 850 Sq Ft.

Batavia Road, London, SE14



Total area (approx.): 78.5 sq. m (844.5 Sq. ft)
Balcony: 4.3 sq. m (46.2 Sq. ft)