



Dacre Park, SE13

£700,000

Set within an attractive Locally Listed Victorian terrace, this beautifully presented two-bedroom cottage effortlessly blends period charm with modern comfort. The property has been thoughtfully updated by the current owners, including a standout bathroom with a spacious walk-in shower and a classic three-piece Victorian en-suite. Period details such as sash windows, stripped wood flooring, and elegant fireplaces have been carefully preserved throughout.

At the heart of the home is a bright and airy open-plan lounge and dining area, offering a warm, sociable space ideal for both relaxing and entertaining. To the rear, a stylish kitchen leads directly out to a charming walled garden perfect for outdoor dining or quiet retreats.

Features

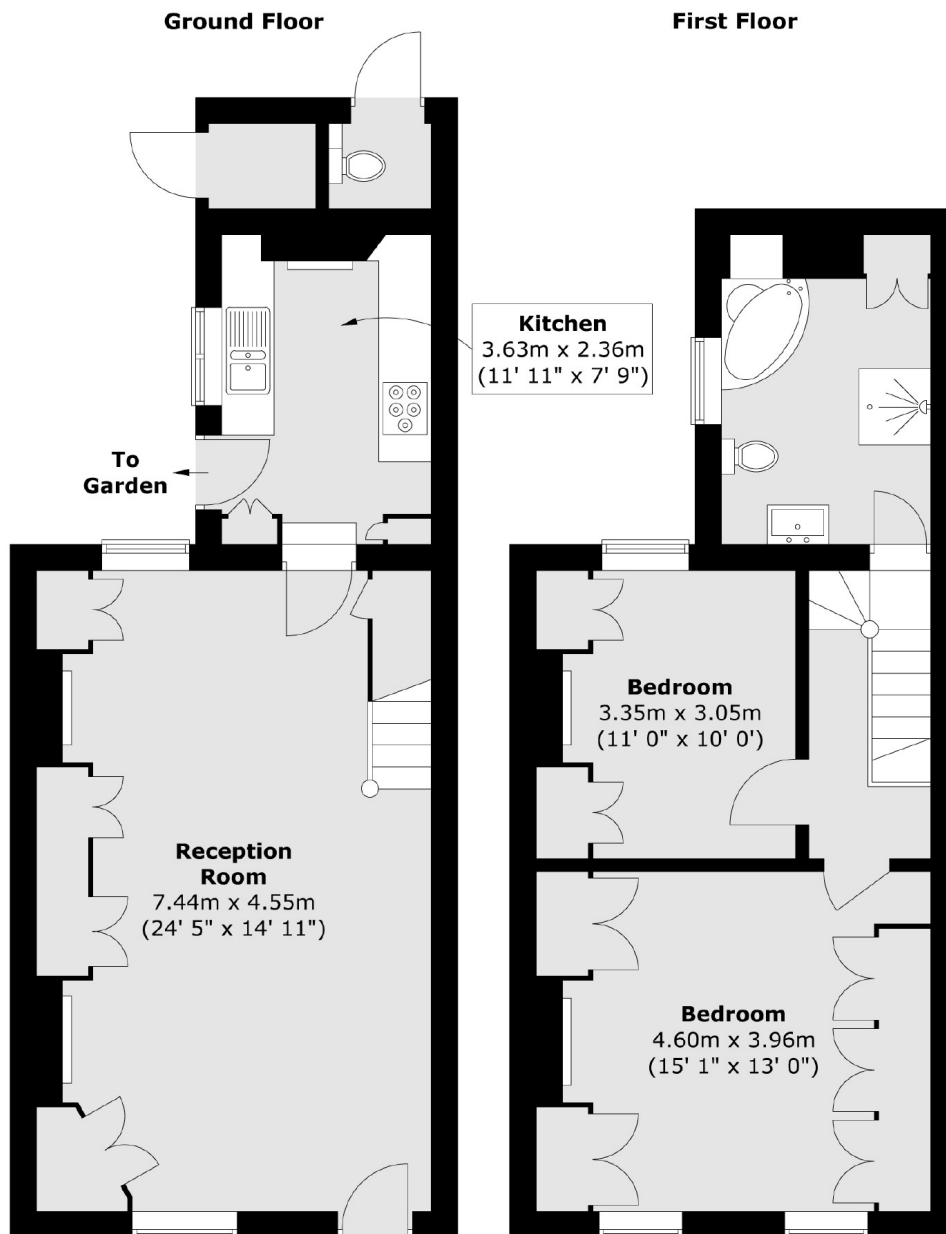
Beautiful Victoria Terrace
Two Double Bedrooms
Open Plan Lounge/Diner
Landscaped Rear Garden
Very Well Presented
Large Family Bathroom



Dacre Park, SE13



Dacre Park, London, SE13



Total area (approx.) : 89.5 sq. m (963 sq. ft)
Total store area (approx.) : 1.2 sq. m (13 sq. ft)

Dexters

Lee
430-432 Lee High Road
Lee
London
Sales
020 8815 2210

Energy Rating: E. We aim to make our particulars both accurate and reliable. However they are not guaranteed; nor do they form part of an offer or contract. If you require clarification on any points then please contact us, especially if you're traveling some distance to view. Please note that appliances and heating systems have not been tested and therefore no warranties can be given as to their good working order.

 **RICS** | Regulated
Estate Agent
and Letting Agent

dexters.co.uk