



Elmscott Road, BR1
£380,000

Dexters



Elmscott Road, BR1

This extended two-bedroom home on Elmscott Road is ideal for first-time buyers or investors. Modernized throughout, it features a bright reception room, a contemporary kitchen leading to a dining area, and a family bathroom on the ground floor. Upstairs are two spacious double bedrooms. The low-maintenance rear garden includes a versatile shed, while the front offers a large block-paved area with potential for a driveway (subject to consent). A great opportunity.

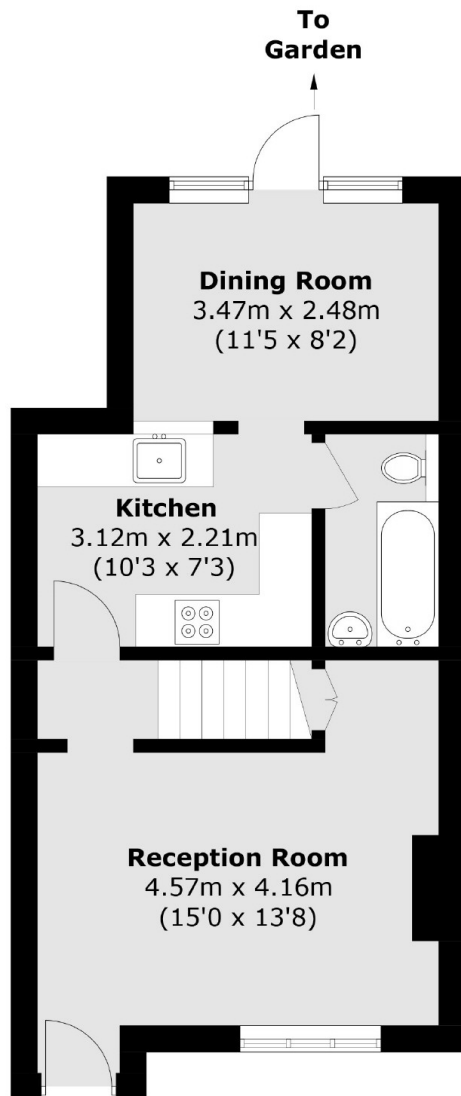
This family home offers a prime location, just a short walk from Grove Park and Beckenham Hill stations with direct links to Central London. Local shops, a Co-op supermarket, and Bromley town centre are nearby. An internal viewing is highly recommended call now to avoid missing out!

Features

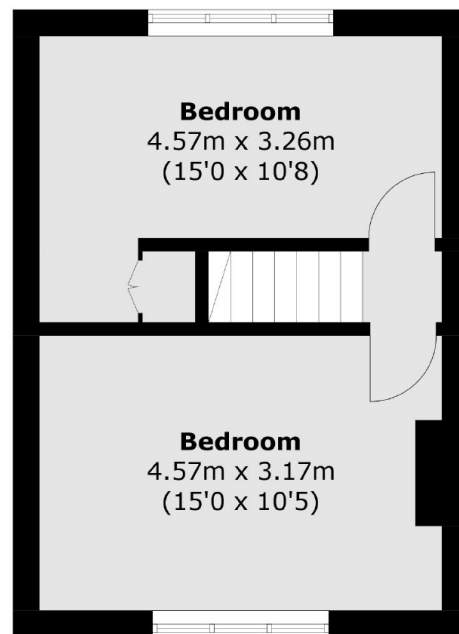
- Mid Terrace Home
- Two Bedrooms
- Potential for Driveway
- Enclosed Rear Garden
- Well Presented Throughout
- Quiet Location



Elmscott Road,
Bromley, BR1



Ground Floor



First Floor

Total area (approx.): 70.5 sq. m (758.8 sq. ft)