



Fairby Road, SE12

£400,000

An exciting opportunity to acquire this uniquely renovated two bedroom maisonette on Fairby Road, part of the popular Courtlands Estate. Internally you enter on the ground floor and are greeted by a lovely lobby space with stairs leading up to the open plan kitchen/Living space, featuring a bespoke birch ply kitchen with poured concrete counter tops. On the second floor there are two double bedrooms, both have built-in closets. The main bedroom sits across the front of the house with a big south-facing window and a brilliant custom-made desk. There is also a family bathroom which is contemporary in style and has an over-bath shower.

Features

- Two Double Bedrooms
- Renovated to High Standard
- Bespoke Kitchen
- Open Plan Living Space
- Modern Bathroom
- Viewing High Recommended

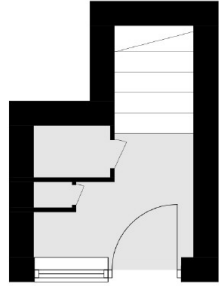


Fairby Road, SE12

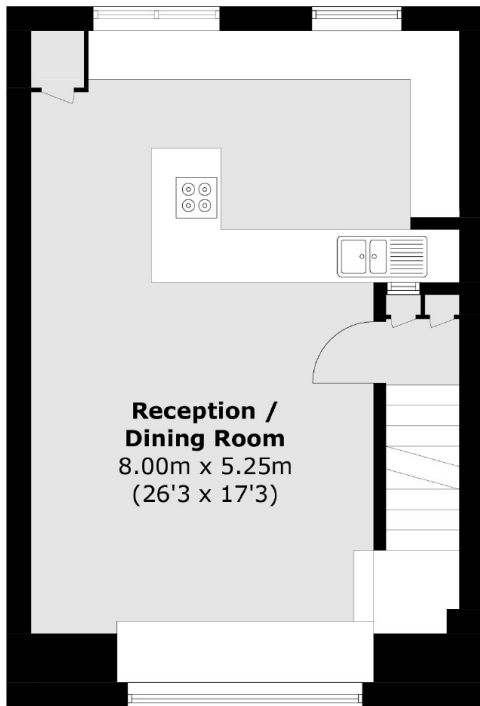
Located in a family-friendly residential area with a real sense of community, this property is within walking distance of Kidbrooke and Lee stations, offering easy links to Central London, West End, and all areas of London, including London airports. In one mile range, it enjoys Sutcliffe Park and Manor House Garden with a Library; local pubs with live music, and restaurants; Supermarkets, and grocery stores as well as conveniently close to Blackheath/Greenwich Park .



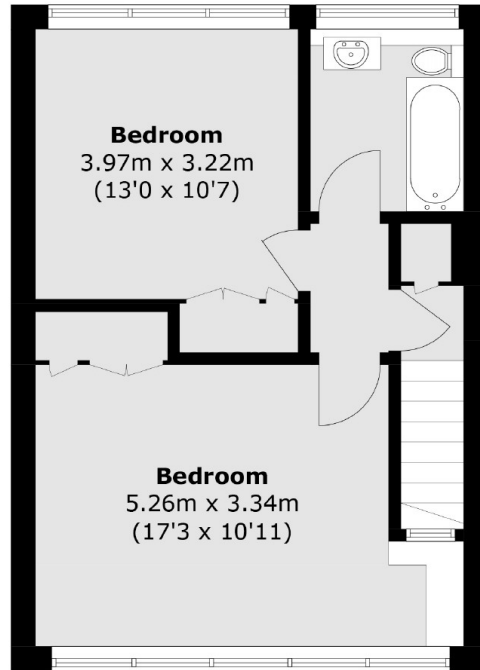
Fairby Road,
London, SE12



Ground Floor



First Floor



Second Floor

Total area (approx.): 86.3 sq. m (928.9 sq. ft)