



## Dacre Gardens, SE13

£625,000

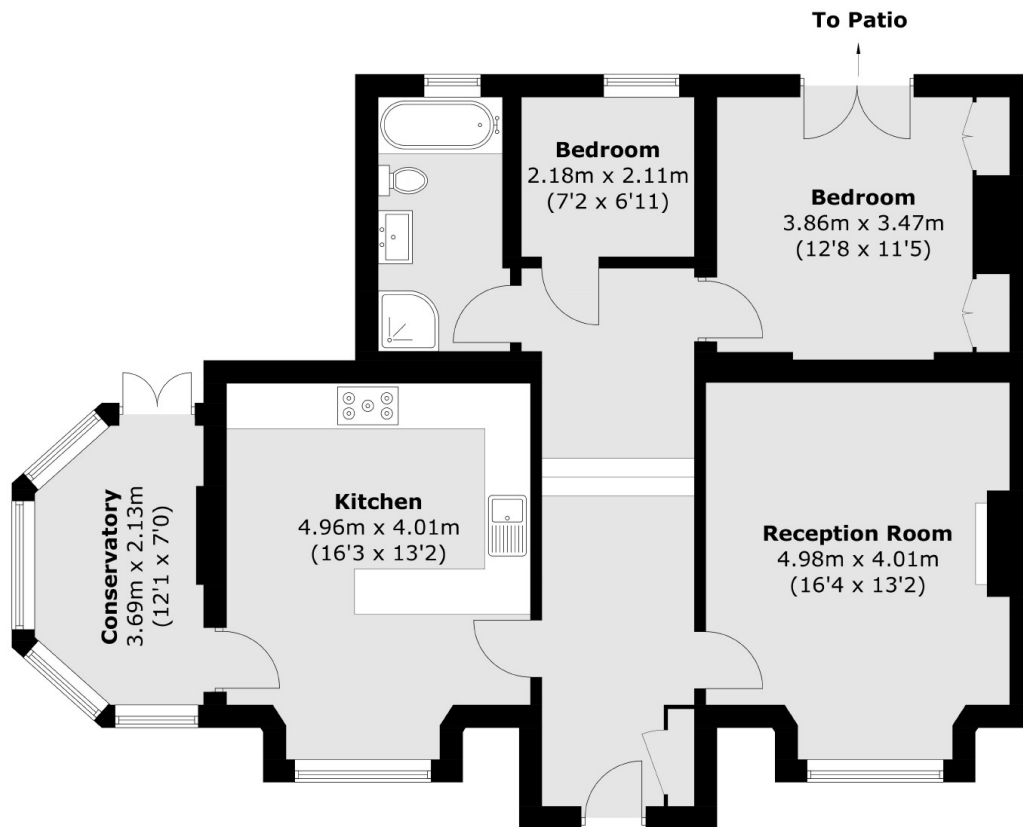
\*\* Offers in excess of \*\* A beautiful, spacious ground floor flat within this stunning converted Edwardian house on a private road just off Brandram Road, a fantastic location within walking distance to Blackheath Village, Lewisham, Hither Green and Manor Park. Internally this property comprises of an entrance hallway, spacious reception, kitchen/breakfast room, conservatory (currently used as dining room), two bedrooms and family bathroom with both bath and separate shower. Externally there is a front private garden and a rear courtyard. There is also off street parking.

Located on Dacre Gardens just 0.6 miles to Blackheath station which allows access into London Bridge in just 12 minutes and a stone's throw to Blackheath Village which is one of London's most inviting neighbourhoods. Blackheath itself is filled with many independent coffee shops, restaurants and boutiques. Dacre Gardens is also 0.7 miles from Hither Green Station, 0.8 miles from Lewisham Station making it easy to commute.

### Features

- Ground Floor Flat
- Share of Freehold
- Two Bedrooms
- Off Street Parking
- Original Features
- Private Cul-De-Sac

# Dacre Gardens, London, SE13



Total area (approx.): 90.0 sq. m (968.7 sq. ft)