



Upwood Road, SE12

£1,450,000

An opportunity to acquire this remarkable detached 1930s family in sought after location, Further benefiting from off street parking and a garage.

Upwood Road is within easy reach of Lee Station, Grove Park Station and Hither Green Station providing great access links into central London, perfect for commuters.

Features

- Detached
- Garage
- Off Street Parking
- Two Bathrooms
- Sought After Location
- Four Bedrooms



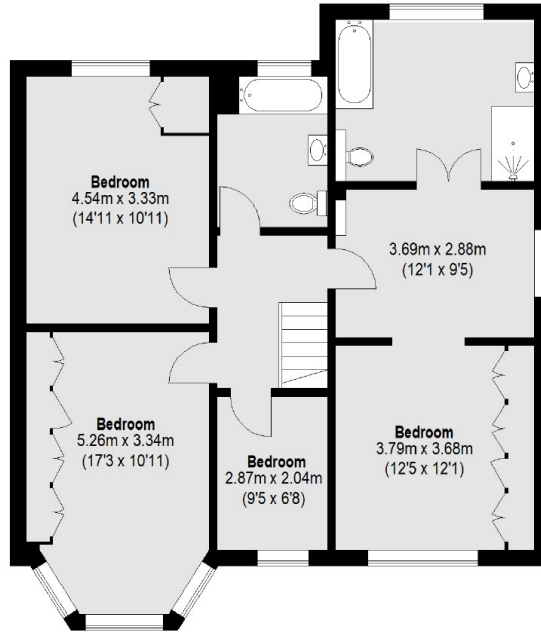
Upwood Road, SE12

The property is arranged over two floors, on the ground floor on entering the home is a hallway leading to the main reception with feature fireplace and access a separate dining room that provides direct access onto a mature rear garden. There is a modern fitted eat in kitchen. Further benefits include a garage and side access.

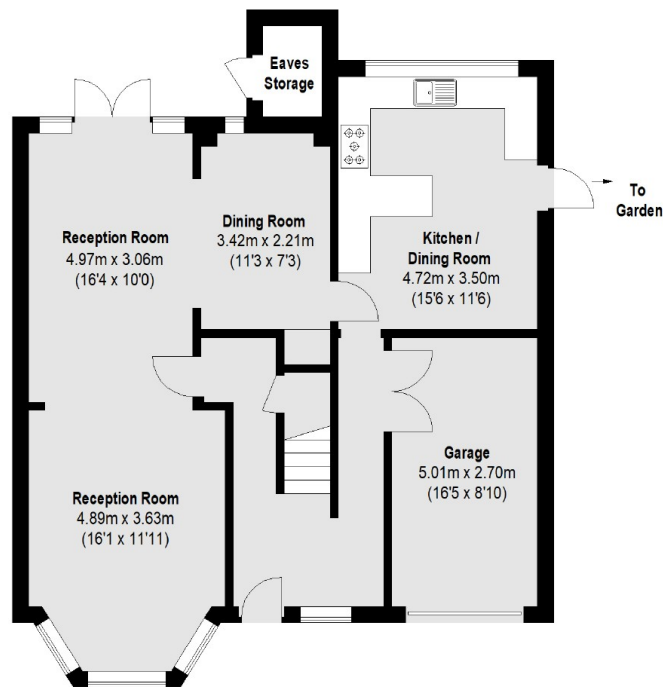
On the first floor there are three double bedrooms, a good size single bedroom, en- suite and a family bathroom.



Upwood Road, London, SE12



First Floor



Ground Floor

Total area (approx.): 180.71 sq. m (1945 Sq. ft) (Including Garage / Excluding Eaves Storage)