



Sunnydale Road, SE12

£585,000

A well-presented three bedroom mid-terrace home set on the popular Courtlands Estate.

Sunnydale Road offers a spacious reception room, a bright kitchen/breakfast room and a modern family bathroom. To the rear is an enclosed private garden, ideal for entertaining and families alike.

This property makes an excellent first home, positioned within easy reach of local amenities, transport links and green open spaces.

Situated on the popular Courtlands development, Kidbrooke Village and train station are within half a mile, and Lee train station and Blackheath Village with its variety of cafes, restaurants and boutique shops are

Features

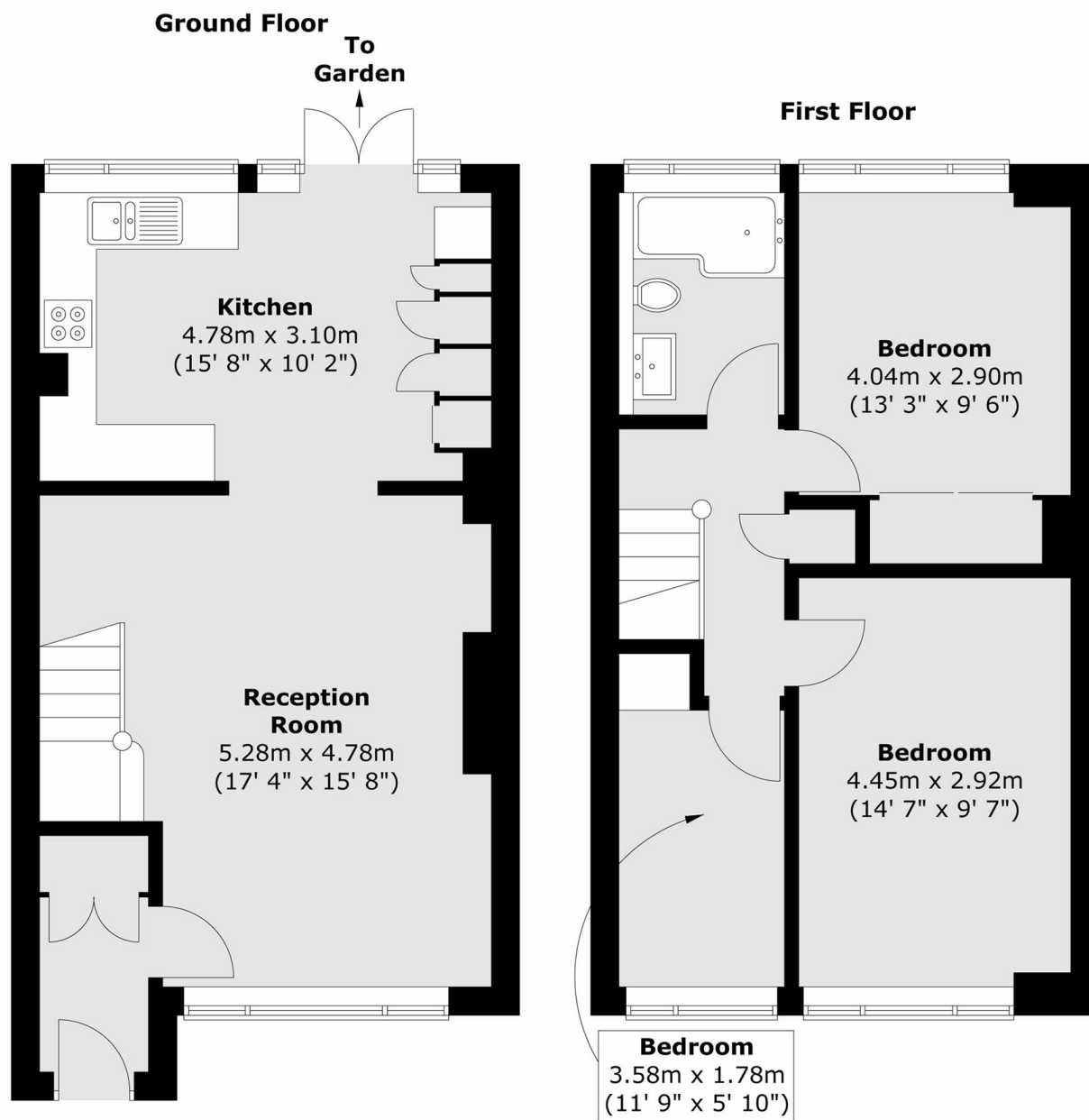
- Mid Terrace Home
- Three Bedrooms
- Spacious Lounge
- Modern Kitchen/Breakfast
- Front Garden
- Enclosed Rear Garden
- Garage
- Amazing Views Overlooking Sports fields



Sunnydale Road, SE12



Sunnydale Road, London, SE12



Total area (approx.) : 84.3 sq. m (907 sq. ft)