



## Brampton Road, DA7

### £425,000

Dexters are delighted to present this beautifully finished two bedroom ground floor apartment set within the desirable Aurora Court development in Bexleyheath.

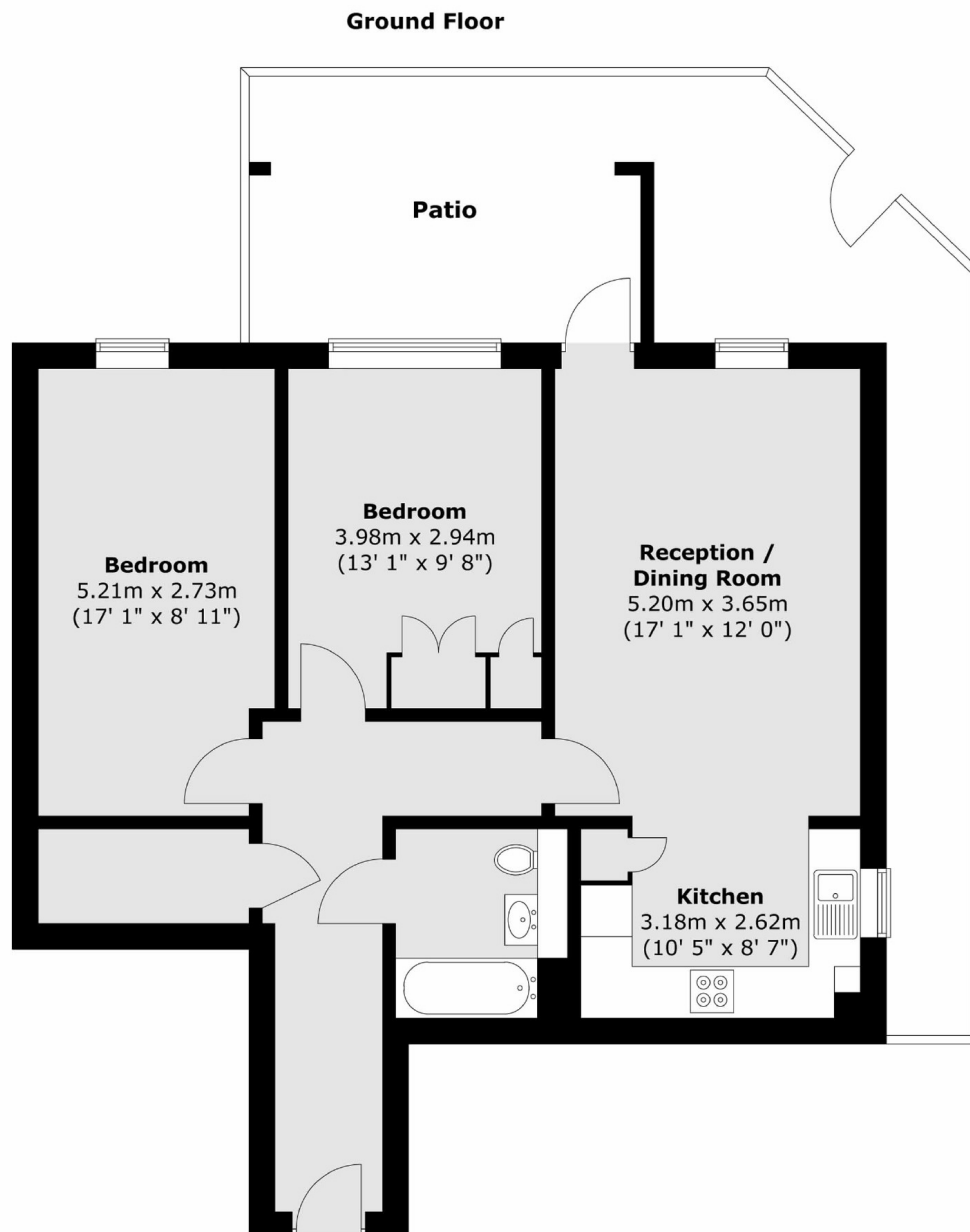
This stylish and spacious home offers a bright open plan living and dining space with a high specification fitted kitchen, integrated appliances and direct access to a private terrace, ideal for relaxing or entertaining. Two generous double bedrooms, a contemporary bathroom and ample storage throughout complete the internal layout. Aurora Court is a modern and well maintained development with landscaped communal gardens and a secure entry system. Residents also benefit from an allocated parking space and the remaining years of the building warranty.

Perfectly located within walking distance of Bexleyheath Station with Abbey Wood and the Elizabeth Line just a short drive away and moments from the green open spaces of Danson Park.

### Features

- No Upward Chain
- Ground Floor Apartment
- Two Double Bedrooms
- Spacious Private Terrace
- Allocated Parking
- Communal Gardens

Brampton Road,  
Bexleyheath, DA7



Total area (approx.) : 72.1 sq. m (776 sq. ft)  
Total patio area (approx.) : 31.3 sq. m (337 sq. ft)

**Dexters**

Lee  
430-432 Lee High Road  
Lee  
London  
Sales  
020 8815 2210

Energy Rating: B. We aim to make our particulars both accurate and reliable. However they are not guaranteed; nor do they form part of an offer or contract. If you require clarification on any points then please contact us, especially if you're traveling some distance to view. Please note that appliances and heating systems have not been tested and therefore no warranties can be given as to their good working order.

 **RICS** | Regulated  
Estate Agent  
and Letting Agent

[dexters.co.uk](http://dexters.co.uk)