



Hereford Gardens, SE13
£475,000

Dexters



Hereford Gardens, SE13

Nestled within the well-maintained surroundings of Hereford Gardens, this beautifully presented one-bedroom flat offers modern living with a touch of character, moments from the excellent transport links and amenities of Lewisham.

The property features a spacious reception room with large windows allowing for an abundance of natural light, a separate contemporary kitchen with sleek cabinetry and a generously sized double bedroom. The bathroom is modern and fully tiled, offering a clean and comfortable finish. Additional benefits include ample storage, private garden, residents' parking, a full equipped garden studio that is fully insulated and includes an ac/heating unit providing an excellent work from home space or a guest bedroom. The property also has the potential to be extended (with planning permission recently granted) into two generous sized bedrooms with open plan living/dining space.

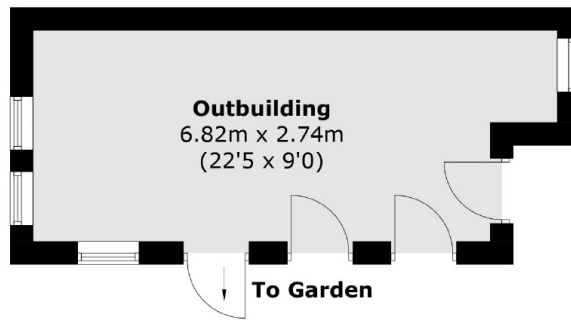
This flat offers a peaceful retreat while being just a short distance away from Hither Green Station, providing swift links into London Bridge and beyond. Outstanding ofsted rated schools, shops and cafés are around the corner. Local green spaces include Manor House Gardens.

Features

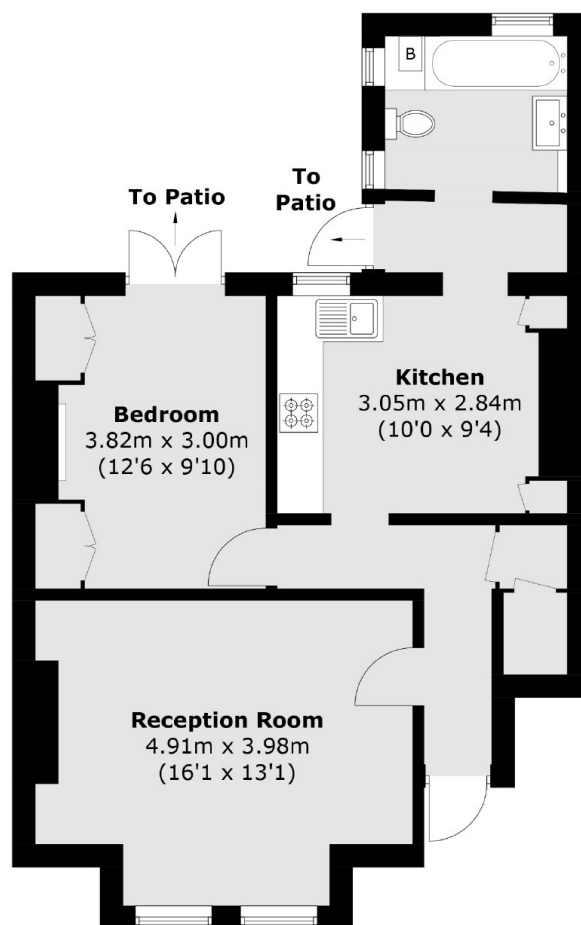
- Direct Access To Large Private Garden
- Generous Sized One Bedroom
- Modern Living
- Natural Light Throughout
- Ample Storage



Hereford Gardens, London, SE13



Outbuilding
(Not Shown In Actual Location / Orientation)



Ground Floor

Total area (approx.): 56.8 sq. m (611.4 sq. ft)
Outbuilding: 17.9 sq. m (192.7 sq. ft)