



Burnt Ash Road, SE12

£360,000

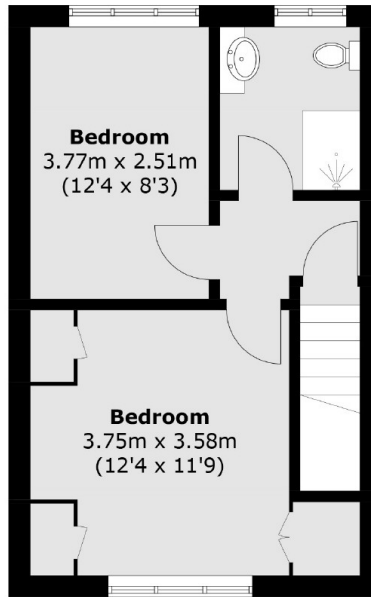
Two bedroom maisonette on Burnt Ash Road. Comprising of an entrance hallway on the ground floor with staircase leading to the main level featuring a spacious lounge, dining space and kitchen. On the second floor you will find two double bedrooms and family bathroom. Perfect for a first time buyer looking to be in a ever popular location ideally located for both transport and amenities.

Conveniently located, Burnt Ash Road offers easy access to local amenities, including shops, cafés, and parks. Residents benefit from excellent transport links, with nearby bus routes and both Lee, Kidbrooke and Blackheath train station providing quick connections to central London and beyond. The property also has the added benefit of being a 15 minute walk from Blackheath village, with additional café's, shops and restaurants.

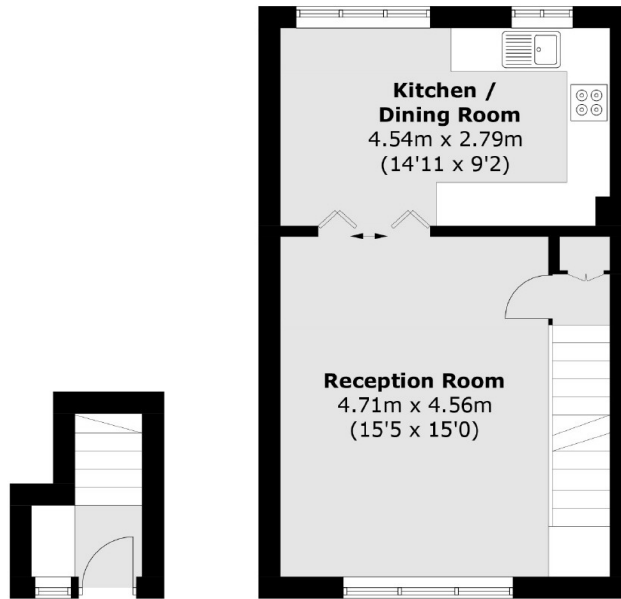
Features

- Top Floor Maisonette
- Two Bedrooms
- Lounge And Dining Room
- Spacious Living
- Popular Location
- Ideal First Home

Burnt Ash Road,
London, SE12



Second Floor



Ground Floor

First Floor

Total area (approx.): 72.0 sq. m (774.9 sq. ft)