



**Sidcup High Street, DA14**

**£1,600** Per calendar month

**Dexters**



## Sidcup High Street, DA14

Be the first to live in this stunning, brand new one-bedroom apartment right in the heart of Sidcup High Street! Perfect for the busy professional, the property is fully furnished including flat screen T.V, Secure gated parking and is complete with high end fixtures and fittings throughout.

Located opposite the newly refurbished Sidcup Storyteller, the property is in an ideal location with Sidcup Station just minutes away, offering regular trains to London Bridge (around 20 minutes), Charing Cross, and Cannon Street, making it ideal for commuters. There are also multiple bus routes connecting you to Eltham, Bromley, Bexleyheath, and beyond. The green open spaces of Foots Cray Meadows and Sidcup Place Park are all within close proximity as are cosy Cafes, Independent restaurants, major supermarkets, Gyms and Leisure center.

### Features

- Newly Built
- Prime Location
- Off Street Parking
- High Spec Fixtures & Fittings
- Small Development
- Contemporary Bathroom



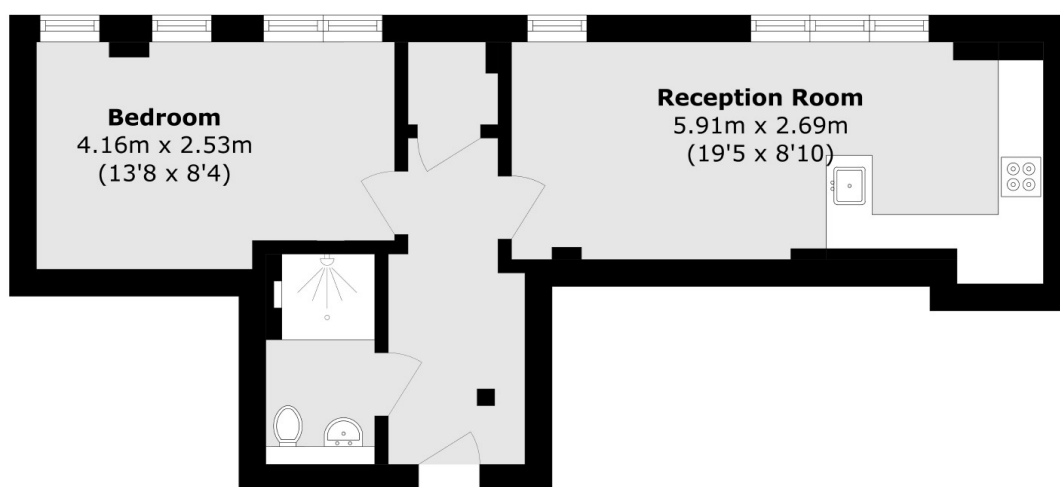








# Sidcup High Street, Sidcup, DA14



Total area (approx.): 34.1 sq. m (367.0 sq. ft)