



Fairby Road, SE12

£375,000

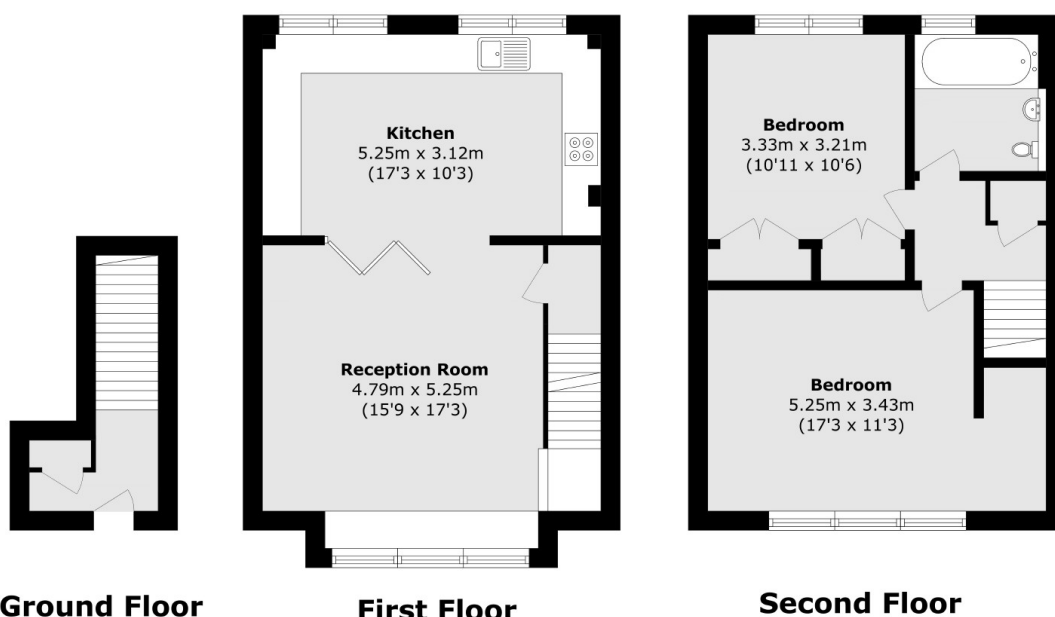
Set across two levels, this bright and spacious home offers a well-proportioned layout throughout. The property comprises a generous reception room with space for both living and dining, a separate kitchen and two good-sized double bedrooms. Large windows and elevated positioning ensure plenty of natural light and pleasant views.

Located in a family-friendly residential area with a real sense of community, this property is within walking distance of Kidbrooke and Lee stations, offering easy links to Central London, West End, and all areas of London, including London airports. In one mile range, it enjoys Sutcliffe Park and Manor House Garden with a Library; local pubs with live music, and restaurants; Supermarkets, and grocery stores as well as conveniently close to Blackheath/Greenwich Park .

Features

- Spacious Top Floor Maisonette
- Split Level
- Two Double Bedrooms
- Large Kitchen And Reception Room
- Close Proximity To Lee And Kidbrooke Stations
- Chain Free

Fairby Road, London, SE12



Total area (approx.): 84.6 sq. m (910.6 sq. ft)