

## Courtlands Avenue, SE12

### £375,000

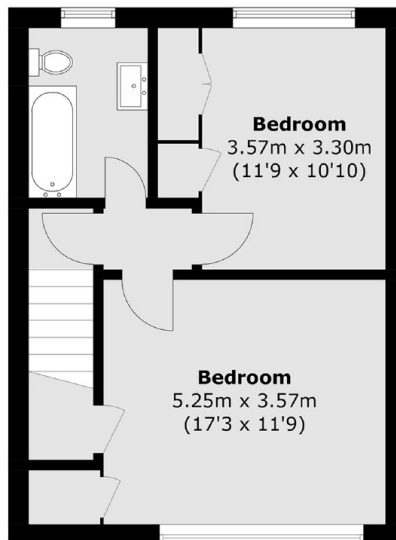
A fantastic two-bedroom split-level maisonette located on the highly sought-after Courtlands Estate. This property offers a spacious lounge, dining area, kitchen, two double bedrooms, and a modern shower room. This property is being sold with no upward chain.

Situated on the popular Courtlands development, Kidbrooke Village and train station are within half a mile and Lee train station and Blackheath Village with its variety of cafes, restaurants and boutique shops are within a mile radius. Viewing highly recommended.

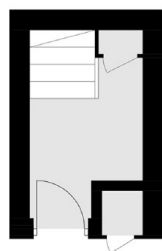
### Features

- Split Level Maisonette
- Two Double Bedrooms
- Modern Kitchen & Bathroom
- Very Well Presented
- Popular Location
- Walking Distance To Local Amenities

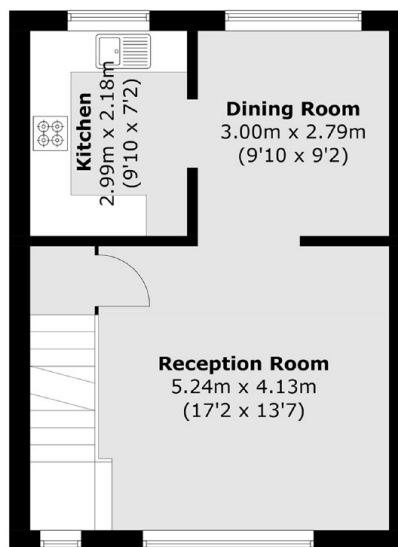
# Courtlands Avenue, London, SE12



**Second Floor**



**Ground Floor**



**First Floor**

Total area (approx.): 81.4 sq. m (876.2 sq. ft)

## Dexters

Lee  
430-432 Lee High Road  
Lee  
London  
Sales  
020 8815 2210

Energy Rating: C. We aim to make our particulars both accurate and reliable. However they are not guaranteed; nor do they form part of an offer or contract. If you require clarification on any points then please contact us, especially if you're traveling some distance to view. Please note that appliances and heating systems have not been tested and therefore no warranties can be given as to their good working order.

 **RICS** | Regulated  
Estate Agent  
and Letting Agent

[dexters.co.uk](https://www.dexters.co.uk)