



Burnt Ash Road, SE12

£625,000

Set across three well-balanced floors, this four-bedroom townhouse offers versatile living ideal for modern family life or those in need of extra space to work from home. The ground floor features a converted garage, currently used as an office, but perfectly suited as a bedroom, studio or additional reception room. Upstairs, a bright and generously sized reception room sits alongside a separate kitchen and dedicated dining area offering a practical yet sociable living space. The top floor provides two comfortable bedrooms and a well-appointed family bathroom. Outside, the property benefits from a private rear garden, rare gated side access and a driveway to the front. Conveniently positioned within easy reach of both Lee and Hither Green stations, as well as local schools,

Features

- Four Bed Townhouse
- Prime Location
- Converted Garage
- Walking Distance To Lee Station
- Well-Proportioned Bedrooms
- Close To Local Amenities

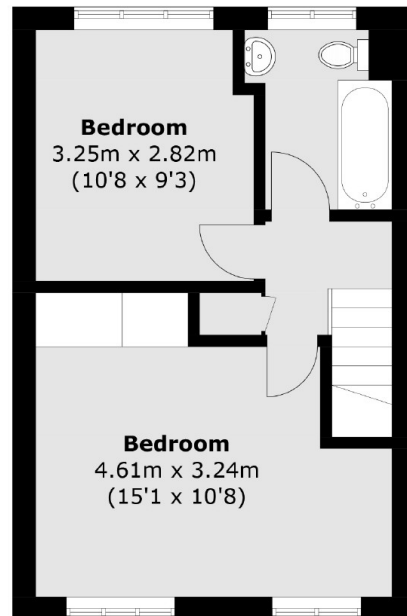


Burnt Ash Road, SE12

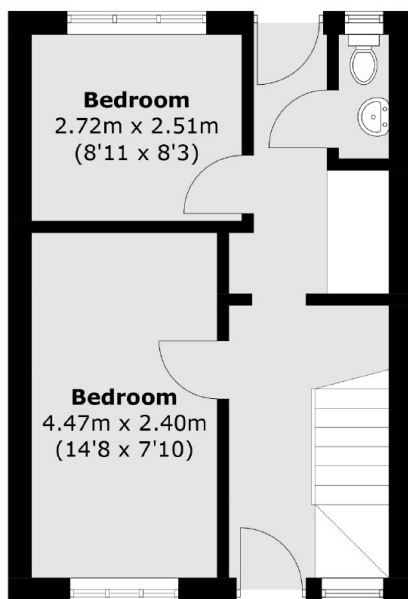
Situated on the ever-convenient Burnt Ash Road, this home is just 0.2 miles from Lee Station, offering direct services into London Bridge, Waterloo East and Charing Cross. Hither Green Station is also within easy reach (0.7 miles away), providing further connections across the capital. The area is well served by local bus routes and is surrounded by a selection of well-regarded primary and secondary schools, making it a popular choice for families. Nearby Manor House Gardens, local cafés, pubs, and independent shops add to the strong sense of community, while Blackheath and Lewisham are just a short journey away.



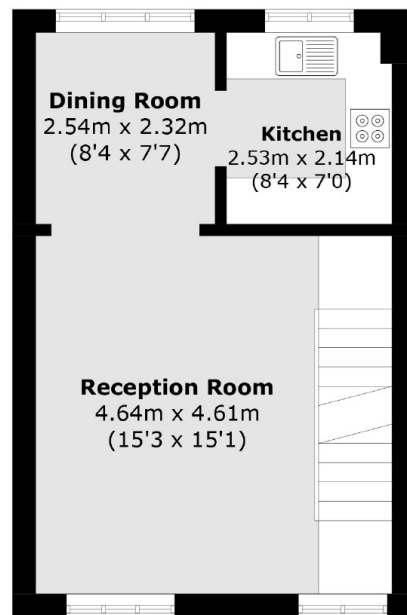
Burnt Ash Road, London, SE12



Second Floor



Ground Floor



First Floor

Total area (approx.): 100.1 sq. m (1,077.4 sq. ft)