



Courtlands Avenue, SE12

£350,000

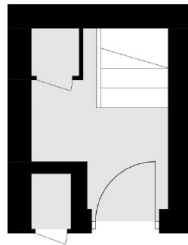
This charming top-floor, two-bedroom split-level maisonette offers a unique blend of space and style. Spread across two floors, the property boasts a bright and airy living area, perfect for relaxing or entertaining. The well-proportioned kitchen provides ample storage. Upstairs, you'll find two generously sized bedrooms, each filled with natural light, and a family bathroom. This maisonette combines comfort and convenience. Its prime location offers easy access to local amenities, transport links, and scenic views. Ideal for professionals or small families, this home is a perfect blend of privacy and practicality.

Located in a family-friendly residential area with a real sense of community, this property is within walking distance of Kidbrooke Village and Blackheath Village. Enjoy Sutcliffe Park and Manor House Gardens, Supermarkets, David Lloyd fitness and leisure club and grocery stores as well as conveniently close to Blackheath/Greenwich Park. For trains, Kidbrooke and Lee stations are both close by, offering easy links to central London. Convenient for the buses; at the end of Courtlands Avenue you can catch buses on the main routes to Lewisham, Eltham and other destinations. Close by to highly rated schools, including outstanding rated Wingfield Primary School.

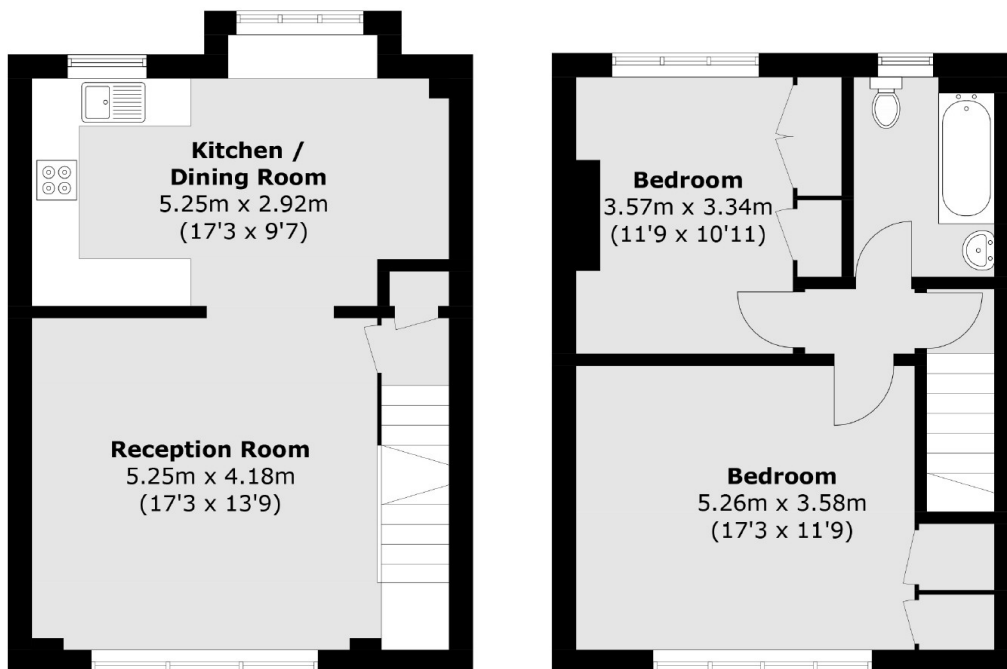
Features

Split Level
Two Double Bedrooms
Close To Local Amenities
Easy Access To Transport
Links
Bright And Airy
Chain Free

Courtlands Avenue,
London, SE12



Ground Floor



First Floor

Second Floor

Total area (approx.): 80.0 sq. m (861.1 sq. ft)
External Cupboard (approx.): 0.3 sq. m (3 sq. ft)