



Courtlands Avenue, SE12

£375,000

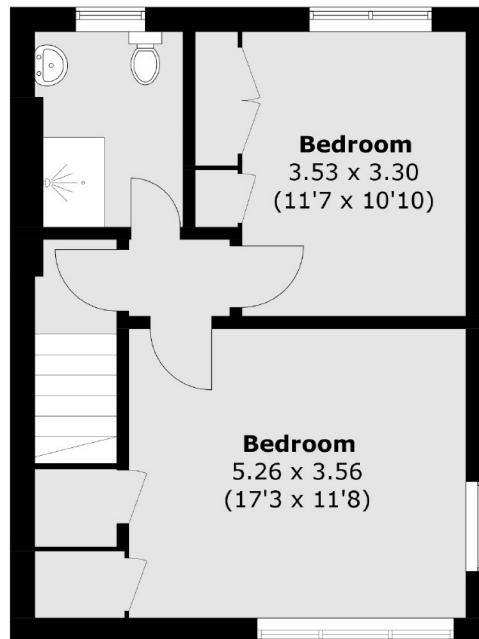
A fantastic two-bedroom split-level maisonette located on the highly sought-after Courtlands Estate. This property offers a spacious through lounge/diner, kitchen, two double bedrooms, and a modern shower room. Externally there is a garage. It is being offered with no upward chain and plenty of potential for improvement.

Courtlands avenue is a quiet tree lined cul de sac located within close proximity to Kidbrooke & Lee stations, the popular Colfe's School and the vibrant Blackheath Village.

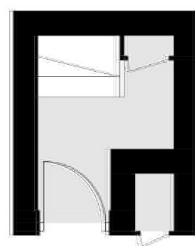
Features

- No Upward Chain
- Two Double Bedrooms
- Room for Improvement
- Spacious Living
- Garage
- Ideal First Home/Investment

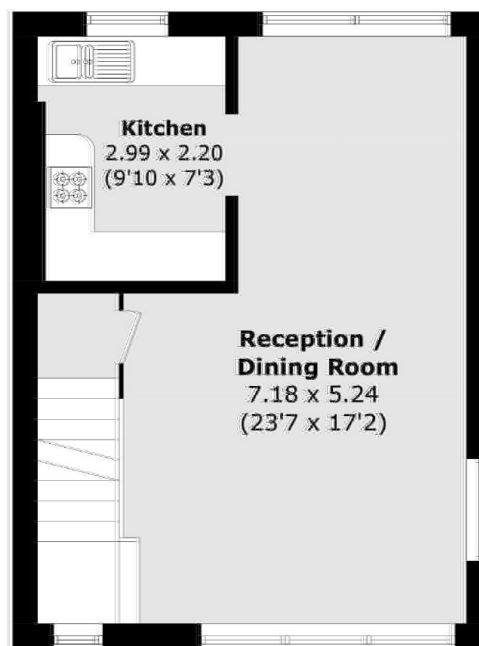
Courtlands Avenue, London, SE12



Second Floor



Ground Floor



First Floor

Total area (approx.): 78.4 sq. m (843.9 sq. ft)
External Cupboard: 0.3 sq. m (3.2 sq. ft)