



Manor Park, SE13
£600,000

Dexters



Manor Park, SE13

Nestled on the top floor of an elegant period mansion conversion on the sought-after Manor Park, this beautifully presented three-bedroom flat offers a perfect blend of period charm and contemporary living. Situated in a tree-lined, tranquil street in Hither Green, this home is ideal for those seeking both comfort and style in a vibrant, community-oriented area. The property boasts a spacious, light-filled open-plan kitchen and living room, designed for both relaxation and entertaining. The modern kitchen is equipped with sleek units and integrated appliances, while large windows flood the space with natural light, enhancing the inviting atmosphere. There are three well-sized bedrooms, including two generous doubles, and a contemporary bathroom with premium fixtures. An additional versatile room offers potential for a home office or guest accommodation, and the flat benefits from a large loft providing ample storage. The beautifully maintained communal garden offers perfect space for alfresco dining or unwinding, while residents also enjoy the convenience of a communal storage shed and an allocated parking space.

This flat enjoys a tranquil residential setting while being just moments away from local amenities, including independent cafés, restaurants, boutique shops and green spaces of Manor House Gardens. With excellent transport links, Hither Green Station is just a short walk away, offering fast connections to London Bridge, Charing Cross, and Cannon Street. This property provides the perfect balance of convenience and serenity.

Features

Period Features

Three Spacious Bedrooms

Ample Storage

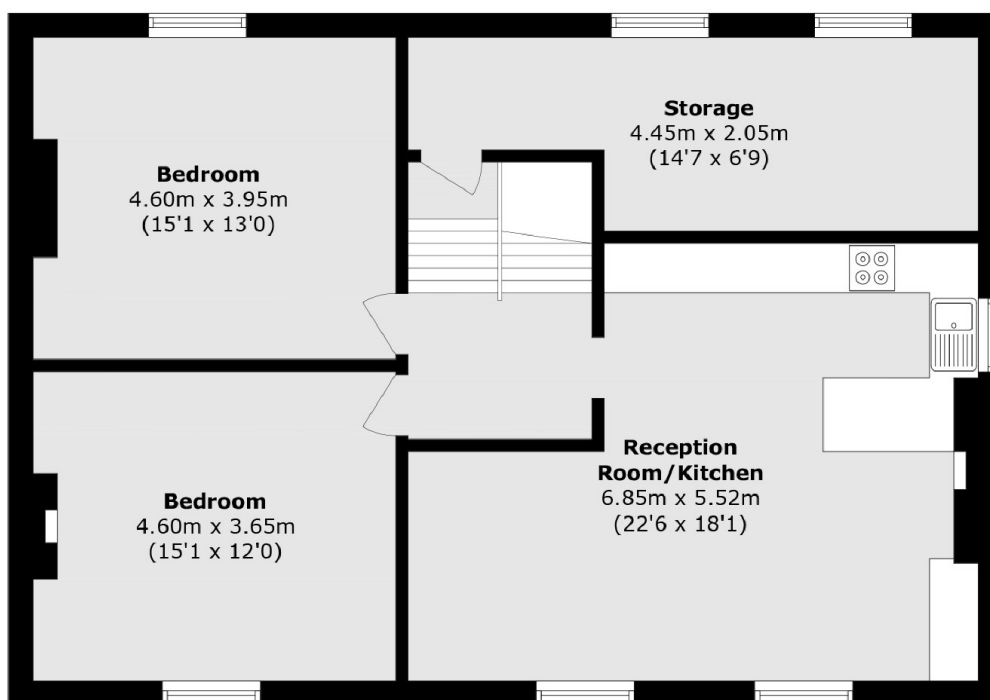
Finished To A High Standard

Walking Distance To Local

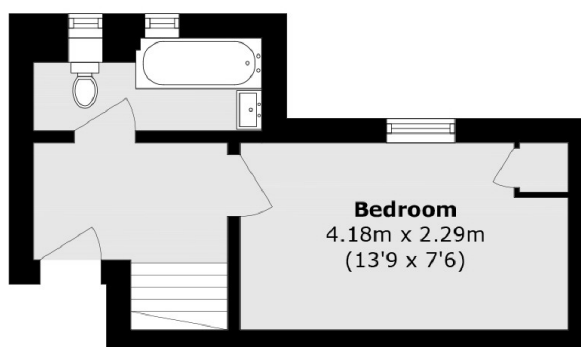
Amenities



Manor Park, London, SE13



Third Floor



Second Floor

Total area (approx.): 109.2 sq. m (1175.4 sq. ft)