



Courtlands Avenue, SE12

£325,000

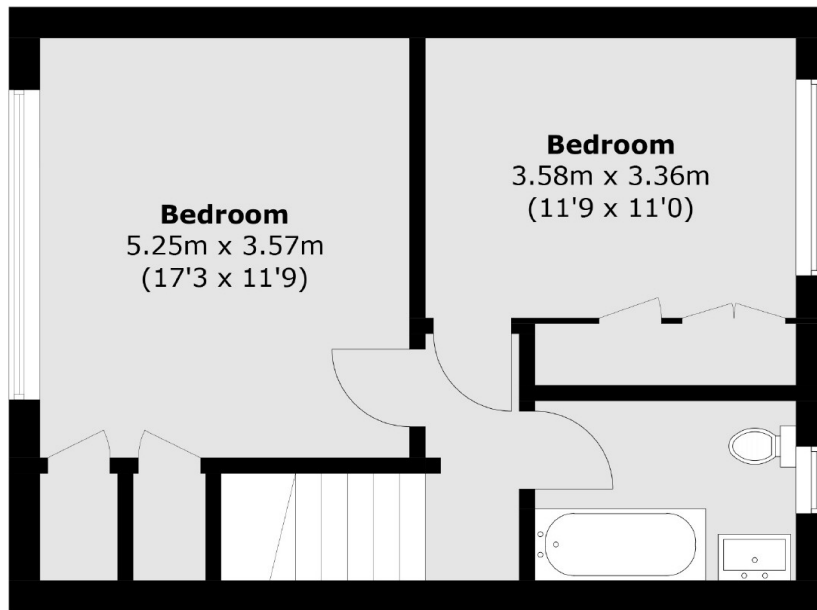
Ideal first home or Investment. This two bedroom split level maisonette is located on Courtlands Avenue, part of the popular Courtlands Estate. In brief this property comprises of an entrance hallway with stairs leading up to the first floor which features a lounge, dining area and kitchen. Upstairs on the second floor you will find two well sized bedrooms and a bathroom. Share of Freehold, long lease with no upward chain.

Located in a family-friendly residential area with a real sense of community, this property is within walking distance of Kidbrooke Village and Blackheath Village. Enjoy Sutcliffe Park and Manor House Garden with a Library, Supermarkets, David Lloyd fitness and leisure club and grocery stores as well as conveniently close to Blackheath/Greenwich Park. For trains, Kidbrooke and Lee stations are both close by, offering easy links to central London. For driving, the property provides and it connects immediately to roads of A205, A2, and A20, bringing O2, Bluewater, Forest and Parks in Kent, and London Bridge all with easy reach. Convenient for the buses; at the end of Courtlands Avenue you can catch buses on the main routes to Lewisham, Eltham and other destinations. Close by to highly rated schools, including outstanding rated Wingfield Primary School.

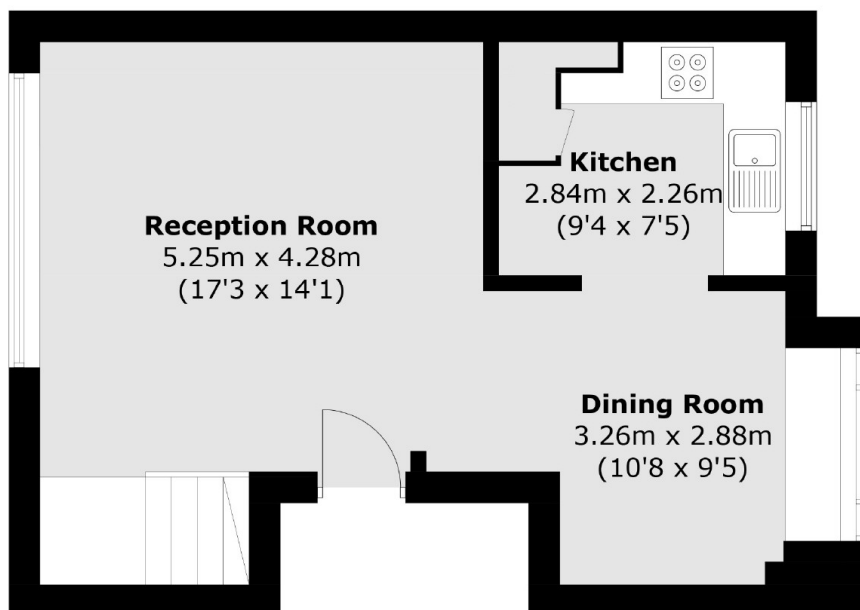
Features

- No Upward Chain
- Two Double Bedrooms
- Split Level Maisonette
- Spacious Living area
- Popular Location
- Ideal First Home/Investment

Courtlands Avenue,
London, SE12



Second Floor



First Floor

Total area (approx.): 74.2 sq. m (798.6 sq. ft)

Dexters

Lee
430-432 Lee High Road
Lee
London
Sales
020 8815 2210

Energy Rating: C. We aim to make our particulars both accurate and reliable. However they are not guaranteed; nor do they form part of an offer or contract. If you require clarification on any points then please contact us, especially if you're traveling some distance to view. Please note that appliances and heating systems have not been tested and therefore no warranties can be given as to their good working order.

 **RICS** | Regulated
Estate Agent
and Letting Agent

dexters.co.uk