



Bramdean Crescent, SE12
£550,000

Dexters



Bramdean Crescent, SE12

**** Offers In Excess Of **** Situated on the desirable Bramdean Crescent, this well-presented three-bedroom property is offered with no upward chain, ensuring a smooth and swift move. The home features two spacious reception rooms, an enclosed rear garden, and convenient off-road parking. The double garage provides excellent storage space with great potential for conversion into a gym, workshop, or additional living area. There is also potential to extend (subject to planning), offering flexibility for future development. This charming home offers comfort, convenience, and potential, making it a perfect choice for families or those looking to add their personal touch.

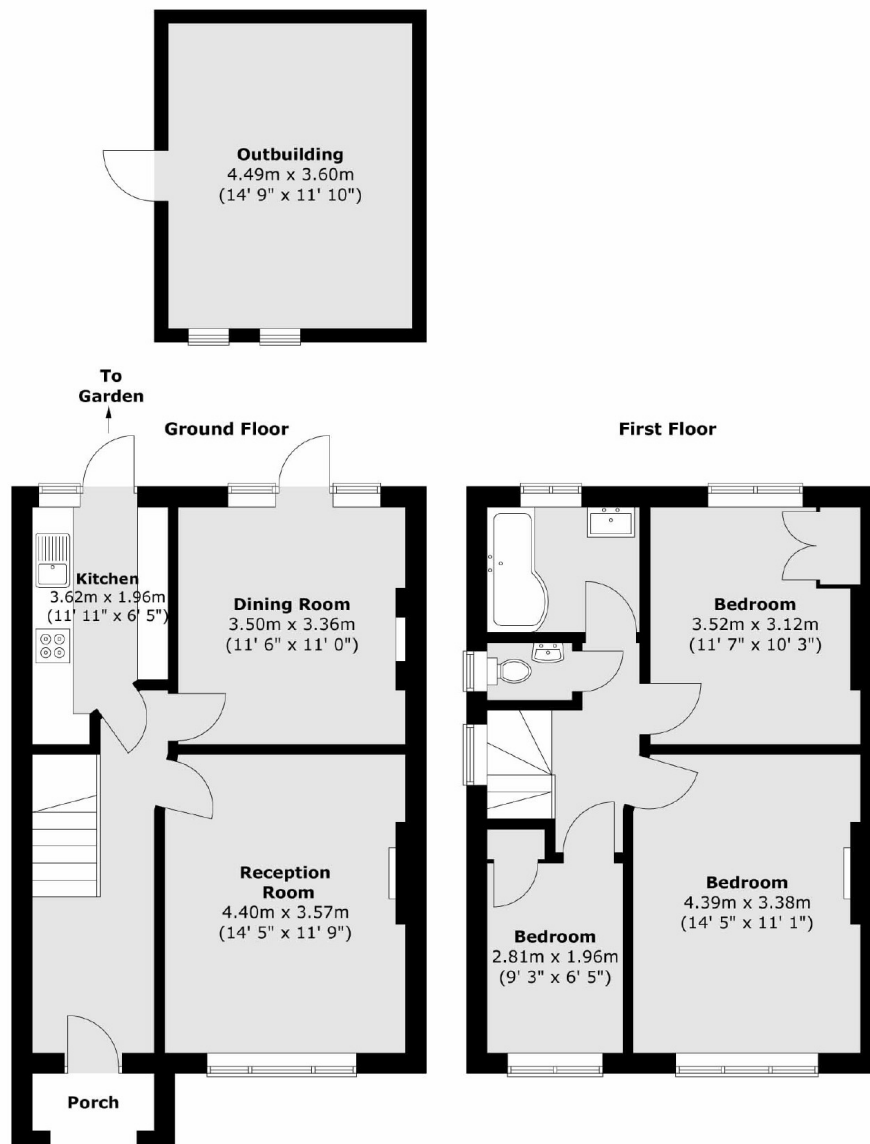
Located between Blackheath to the north and Bromley to the south, Lee, Hither Green, and Grove Park offer an affordable option for young families. Trains from Lee reach London Bridge in 13 minutes, Hither Green in 10 minutes, and Grove Park provides easy access to London and surrounding towns like Sidcup and Gravesend. Nearby Lewisham offers the DLR, shopping, a street market, green spaces, and a variety of international restaurants.

Features

- No Upward Chain
- Three Bedrooms
- End Of Terrace
- Off Road Parking
- Potential to Improve & Extend
- Enclosed Rear Garden



Bramdean Crescent, London, SE12



Total area (approx.) : 89.1 sq. m (959 sq. ft)
Total outbuilding area (approx.) : 16.2 sq. m (174 sq. ft)