



Manor Park, SE13
£1,650,000

Dexters



Manor Park, SE13

This beautifully presented three-storey Victorian semi-detached home offers a perfect blend of period charm and modern living. Boasting five spacious bedrooms, the property provides ample space for family living.

On the ground floor, you'll find a bright and airy through lounge/diner, perfect for entertaining or family gatherings. The stunning traditional hand painted kitchen/diner is a standout feature, combining timeless craftsmanship with modern functionality, offering plenty of room for culinary creations and casual dining.

The first floor features a generously sized family bathroom, ideal for relaxation, while the second floor is home to a convenient shower room.

Outside, the property benefits from off-street parking via a private driveway, providing easy access and extra convenience. The enclosed rear garden offers a peaceful retreat, perfect for enjoying outdoor space in privacy.

This home is an exceptional opportunity, offering both style and practicality in a highly desirable location.

The surrounding area is renowned for its lively atmosphere and strong sense of community, offering a wide selection of independent stores, supermarkets

Features

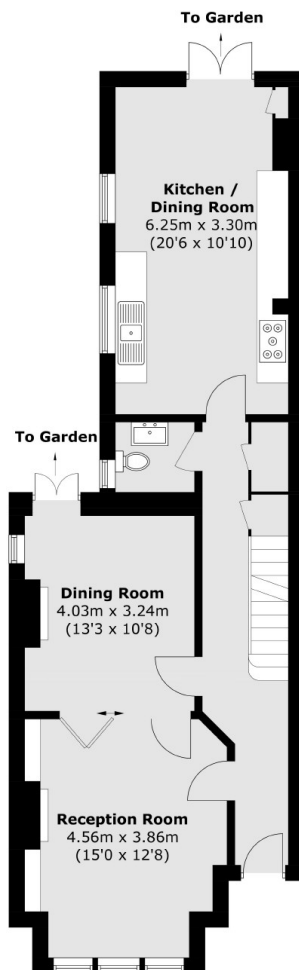
- Traditional Victoria Semi
- Five Bedrooms
- Two Bathrooms
- Off Road Parking
- Full Of Character And Charm
- Enclosed Rear Garden



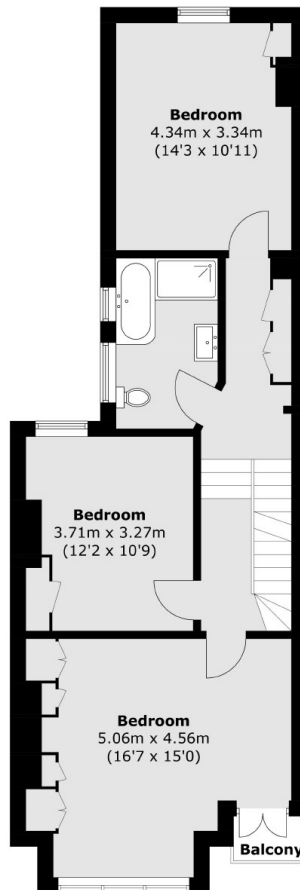




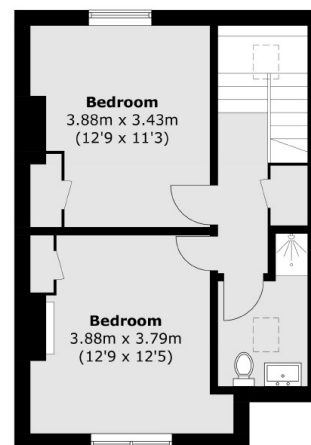
Manor Park, London, SE13



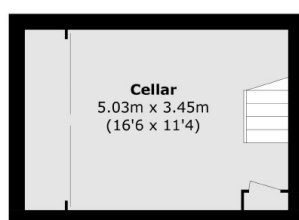
Ground Floor



First Floor



Second Floor



Basement

Total area (approx.): 190.1 sq. m (2,046.2 sq. ft)
Balcony : 1.1 sq. m (11.8 sq. ft)