



Eltham Road, SE12

£375,000

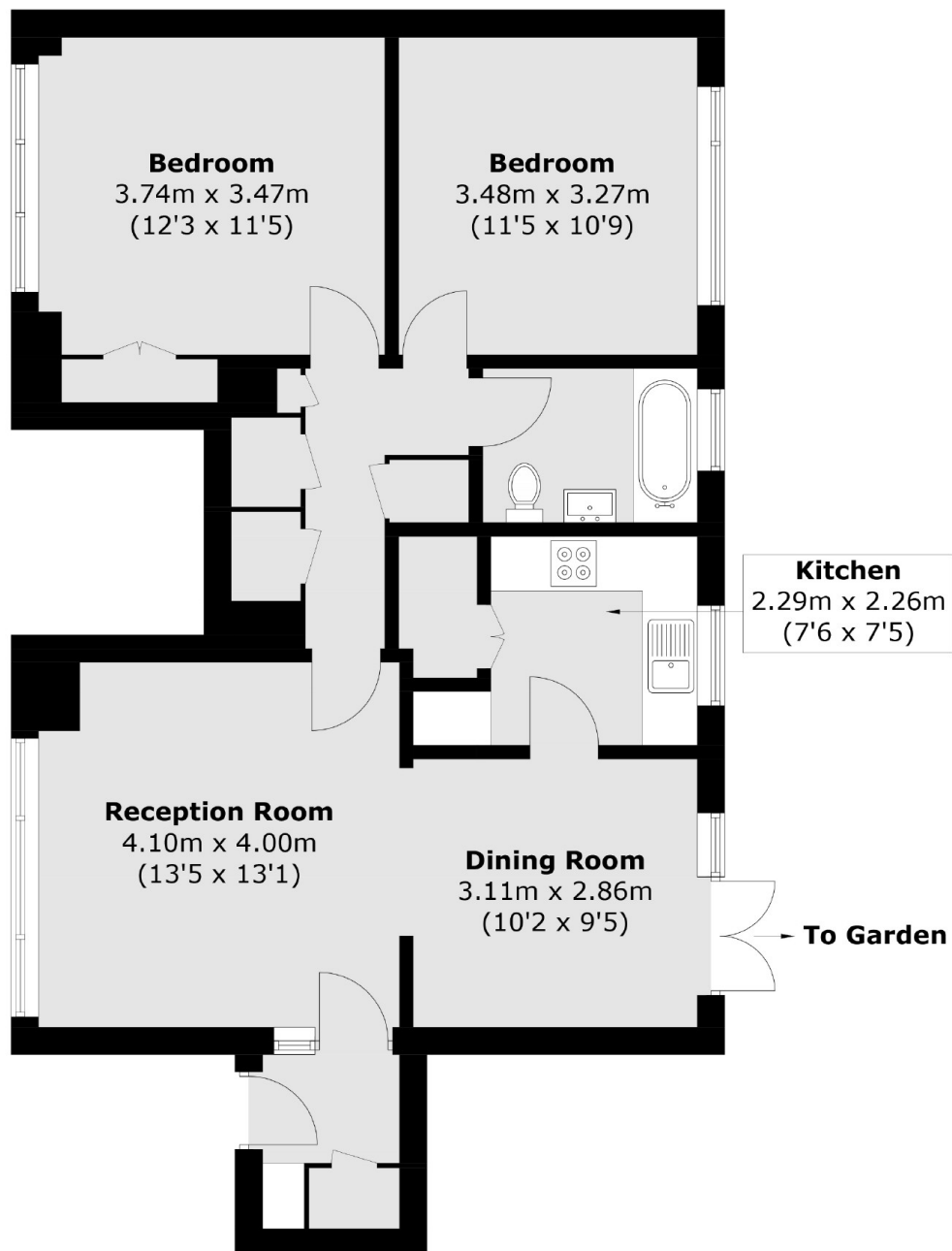
This spacious 2-bedroom maisonette offers a large lounge, separate dining room, and a private low-maintenance rear garden. With no upward chain and potential for improvement, it's the perfect opportunity to create your ideal home. Located on the sought-after Eltham Road, it's a great find for any buyer.

Located in the desirable Courtlands development, this property is just half a mile from Kidbrooke Village and train station, as well as Lee train station. Blackheath Village, with its range of cafes, restaurants, and boutique shops, is within a mile's radius.

Features

- No Upward Chain
- Two Bedrooms
- Private Rear Garden
- Potential To Improve
- Close To Transport Links
- Ideal First Home/Investment

Eltham Road,
London, SE12



Total area (approx.): 75.8 sq. m (815.9 sq. ft)

Dexters

Lee
430-432 Lee High Road
Lee
London
Sales
020 8815 2210

Energy Rating: . We aim to make our particulars both accurate and reliable. However they are not guaranteed; nor do they form part of an offer or contract. If you require clarification on any points then please contact us, especially if you're traveling some distance to view. Please note that appliances and heating systems have not been tested and therefore no warranties can be given as to their good working order.

 **RICS** | Regulated
Estate Agent
and Letting Agent

dexters.co.uk