



Lyme Farm Road, SE12

£425,000

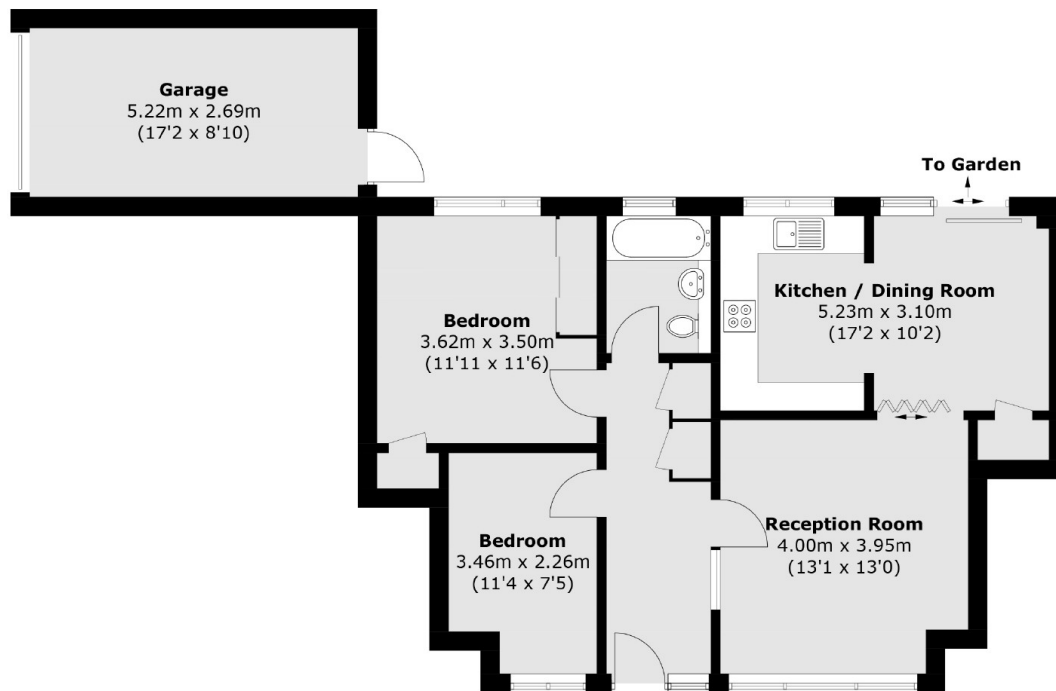
Welcome to this delightful ground floor maisonette located in the highly sought after Courtlands development on Lyme Farm Road in Lee, nestled in a quiet cul-de-sac. This two-bedroom home features a generously sized lounge that flows effortlessly into a bright dining area, ideal for hosting friends and family. The modern kitchen is well-appointed with contemporary fixtures and plenty of storage, offering a wonderful space for cooking and creativity. Step outside to discover a large, enclosed rear garden, perfect for relaxing or hosting outdoor gatherings. The property also includes a garage and backs onto the serene River Quaggy, providing a peaceful and picturesque setting. The cul-de-sac location ensures a quiet, private atmosphere, making it an ideal retreat while still offering easy access to local amenities.

Conveniently located, Lyme Farm Road offers easy access to local amenities, including shops, cafés, and parks. Residents benefit from excellent transport links, with nearby bus routes and both Lee & Kidbrooke train stations providing quick connections to central London and beyond.

Features

- Ground Floor Maisonette
- Two Bedrooms
- Larger Than Average Garden
- Well Presented Throughout
- Garage
- Backing On To The River Quaggy

Lyme Farm Road, London, SE12



Approx Internal Area: 69.5 sq. m (748.1 sq. ft)
Garage: 14.2 sq. m (152.8 sq. ft)
Total: 83.7 sq. m (900.9 sq. ft)