



## Pragnell Road, SE12

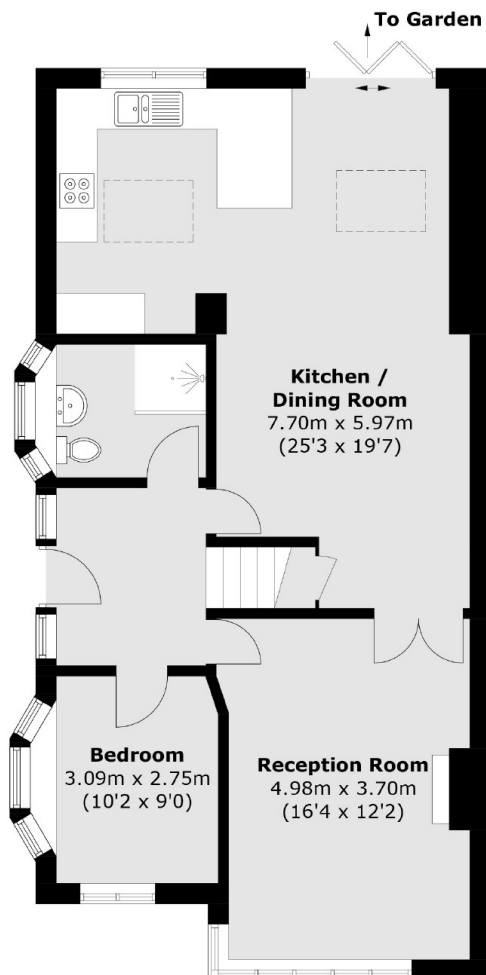
### £699,950

An opportunity to acquire this four bedroom semi detached family home in a sought after location, Briefly comprising of an entrance hallway, fourth bedroom, downstairs bathroom, spacious lounge and a bright open plan kitchen diner area, perfect for entertaining. The first floor comprises of three bedrooms and bathroom. Externally there is a two outhouses, perfect for storage and large garden.

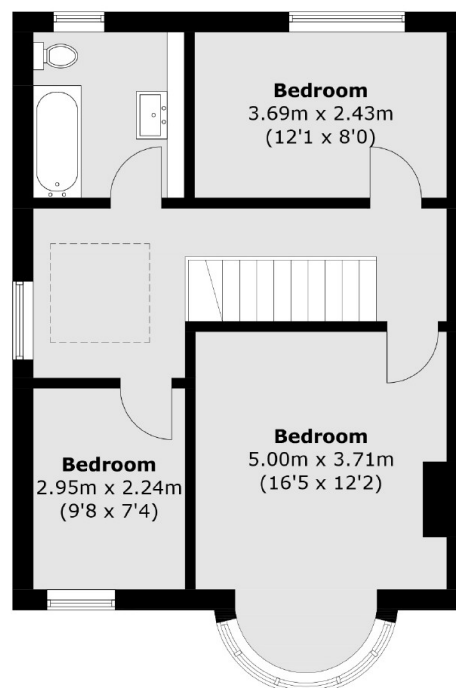
### Features

- Three/Four Bedrooms
- Extended
- Semi Detached House
- Off Street Parking
- Low Maintenance Garden
- Garden Room & Shed

# Pragnell Road, London, SE12



**Ground Floor**



**First Floor**

Total area (approx.): 125.3 sq. m (1,348.7 sq. ft)