



Leyland Road, SE12
£550,000

Dexters



Leyland Road, SE12

This charming three-storey townhouse on Leyland Road offers modern living with a spacious lounge/diner, three generous bedrooms, a private rear garden, and a garage. The open-plan living area is perfect for entertaining, while the private garden provides a peaceful outdoor retreat. With potential for improvement and personalisation, this home offers an excellent opportunity for those looking to add value. Conveniently located near local amenities and transport links, it is ideal for families or professionals seeking space and potential.

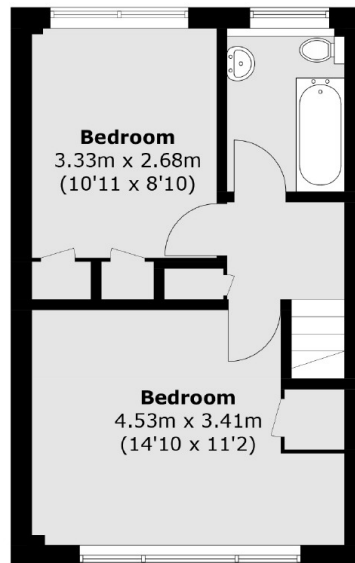
The area offers a variety of local shops, cafes, and restaurants, ensuring you have everything you need right at your doorstep. From independent boutiques to well-known chains, there's something for everyone. Overall, Leyland Road in Lee combines the charm of suburban living with the convenience of urban amenities, making it an ideal location for both families and professionals alike.

Features

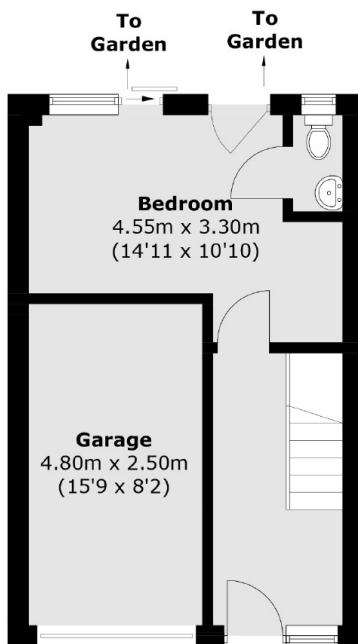
- No Upward Chain
- Three Bedrooms
- Spacious Living/Diner
- Garage
- Private Rear Garden
- Potential to Improve



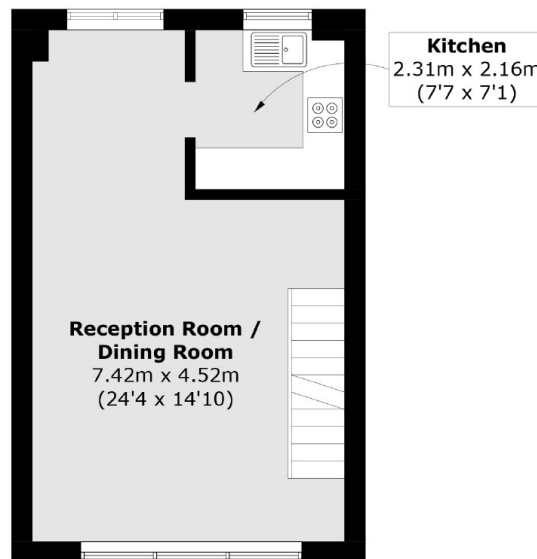
Leyland Road, London, SE12



Second Floor



Ground Floor



First Floor

Approx Internal Area: 88.6 sq. m (953.7 sq. ft)
Garage: 11.7 sq. m (125.9 sq. ft)
Total: 100.3 sq. m (1,079.6 sq. ft)

Dexters

Lee
430-432 Lee High Road
Lee
London
Sales
020 8815 2210

Energy Rating: D. We aim to make our particulars both accurate and reliable. However they are not guaranteed; nor do they form part of an offer or contract. If you require clarification on any points then please contact us, especially if you're traveling some distance to view. Please note that appliances and heating systems have not been tested and therefore no warranties can be given as to their good working order.

RICS Regulated
Estate Agent
and Letting Agent

dexters.co.uk